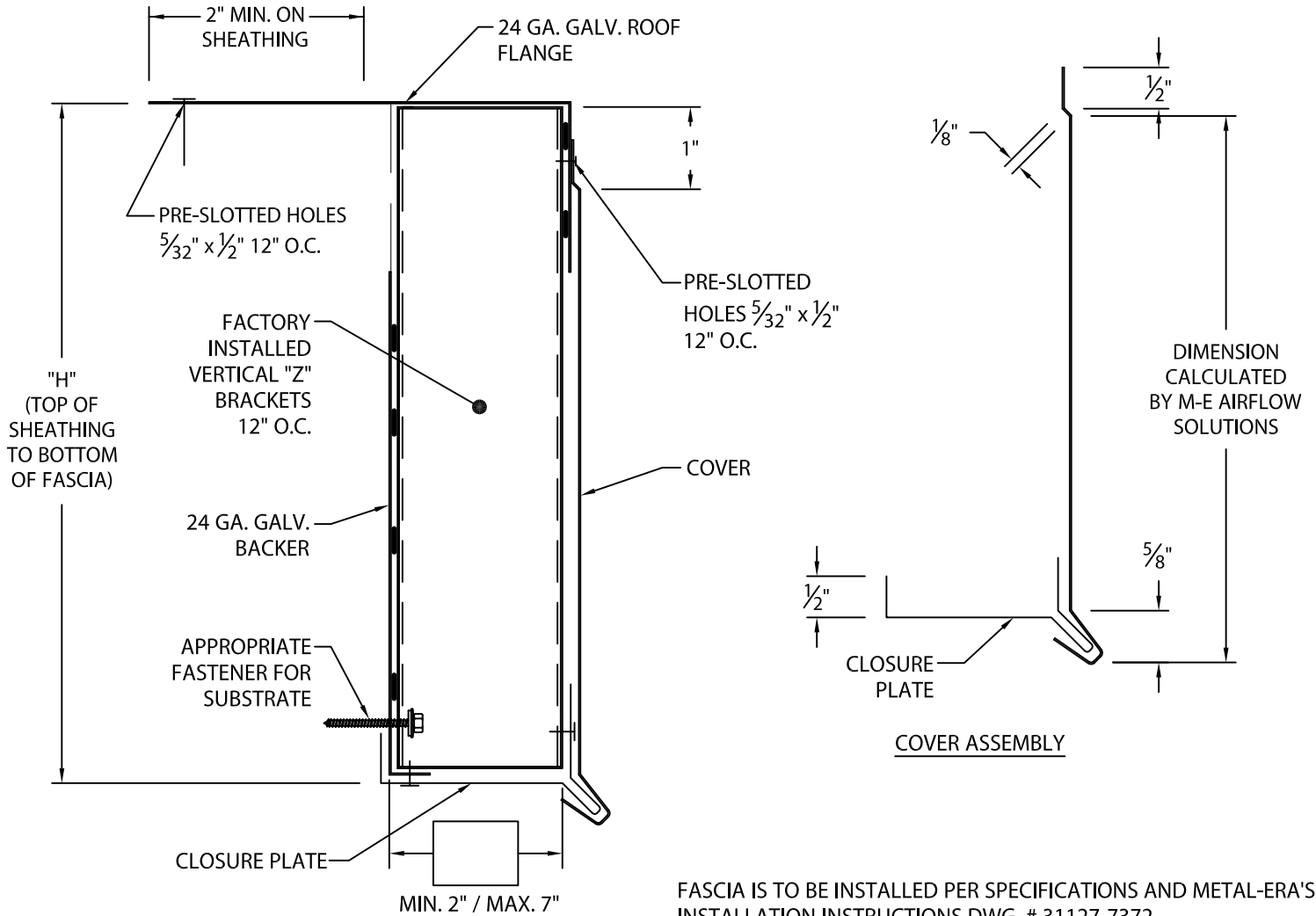


REFERENCE DETAIL:

HI-PERF RAKEFASCIA

WITH VERTICAL "Z" BRACKETS



NOTE: ALL FASTENERS BY OTHERS (SEE INSTALLATION INSTRUCTIONS FOR RECOMMENDATIONS)
CLOSURE PLATE AND COVER SHIPPED LOOSE

"H" DIMENSION:

- 6" COVERAGE 8" COVERAGE 10" COVERAGE
- 12" COVERAGE 14" COVERAGE 16" COVERAGE
- OTHER: _____

Fabrication will proceed only after receipt of signed print approval.

Print Approval:

Architect and/or contractor shall verify all dimensions, sizes and quantities. All products to be installed in strict accordance with Metal-Era's printed instructions.

Approved by: _____

Date: _____

FASCIA IS TO BE INSTALLED PER SPECIFICATIONS AND METAL-ERA'S INSTALLATION INSTRUCTIONS DWG. # 31127-7372

COVER:

- 24 GA. GALVANIZED STEEL 22 GA. GALVANIZED STEEL
- .040" ALUMINUM .050" ALUMINUM
- .063" ALUMINUM OTHER _____

COLOR: _____ FINISH: _____

CLOSURE PLATE:

- 24 GA. GALVANIZED STEEL BONE WHITE 24 GA. GALVANIZED STEEL DARK BRONZE
- 24 GA. GALVANIZED STEEL SANDSTONE 24 GA. GALVANIZED STEEL SLATE GRAY
- 24 GA. GALVANIZED STEEL W/ OTHER COLOR: _____

QUANTITIES:

_____ LINEAL FEET (12'-0" LENGTHS)

_____ PEAK MITERS

SEE ADDITIONAL PRINT APPROVAL FOR RAKE CONDITION

PROJECT:

ARCHITECT:

CONTRACTOR:

REPRESENTATIVE:



Phone: 800-558-2162
Fax: 800-770-3934
www.metalera.com

DATE: 02/21/19

SHT.# ___ OF ___

DRN BY: JJC

CKD BY: SAK

DWG# 31027-7030

H