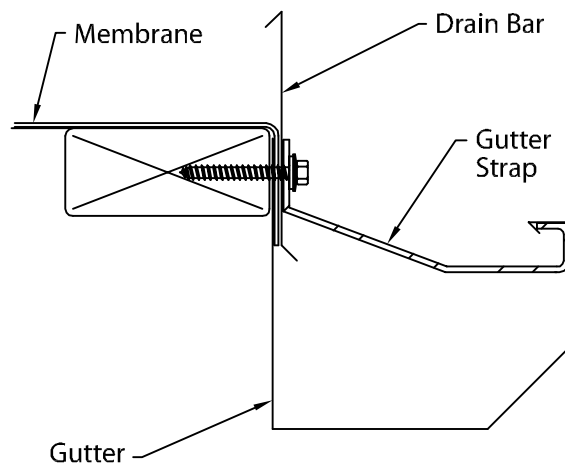
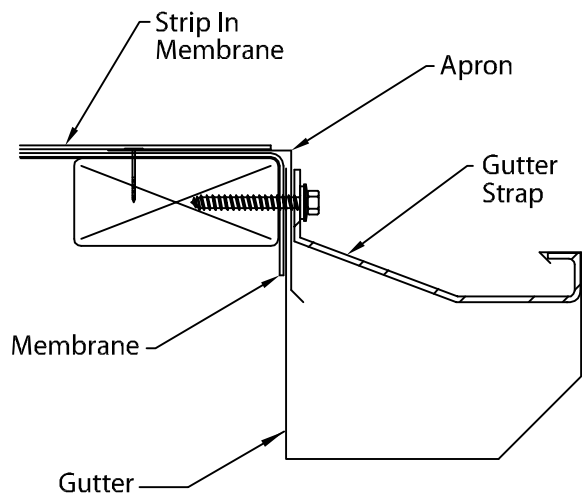


DOW INDUSTRIAL GUTTER

IG-1, IG-2 OR IG-B VERSION

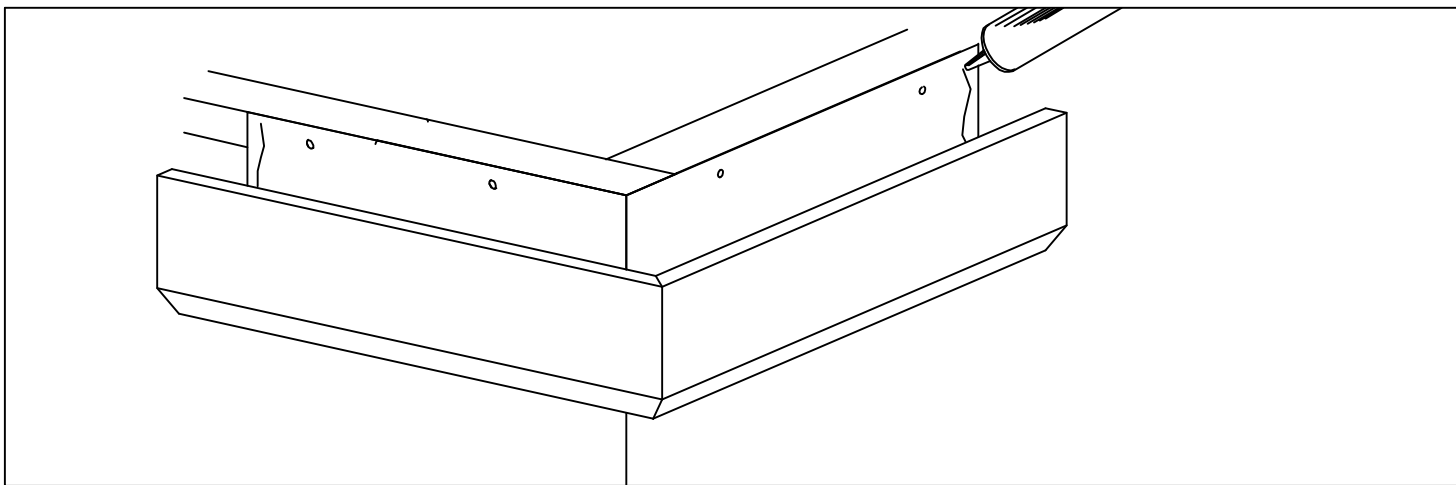
INSTALLATION INSTRUCTIONS

TYPICAL MEMBRANE OPTIONS



STEP 1. MEMBRANE INSTALLATION

Review carefully and follow Dow Roofing Systems' recommendations, and architect's details for installing roof membranes in conjunction with this gutter system.



STEP 2. MITER INSTALLATION

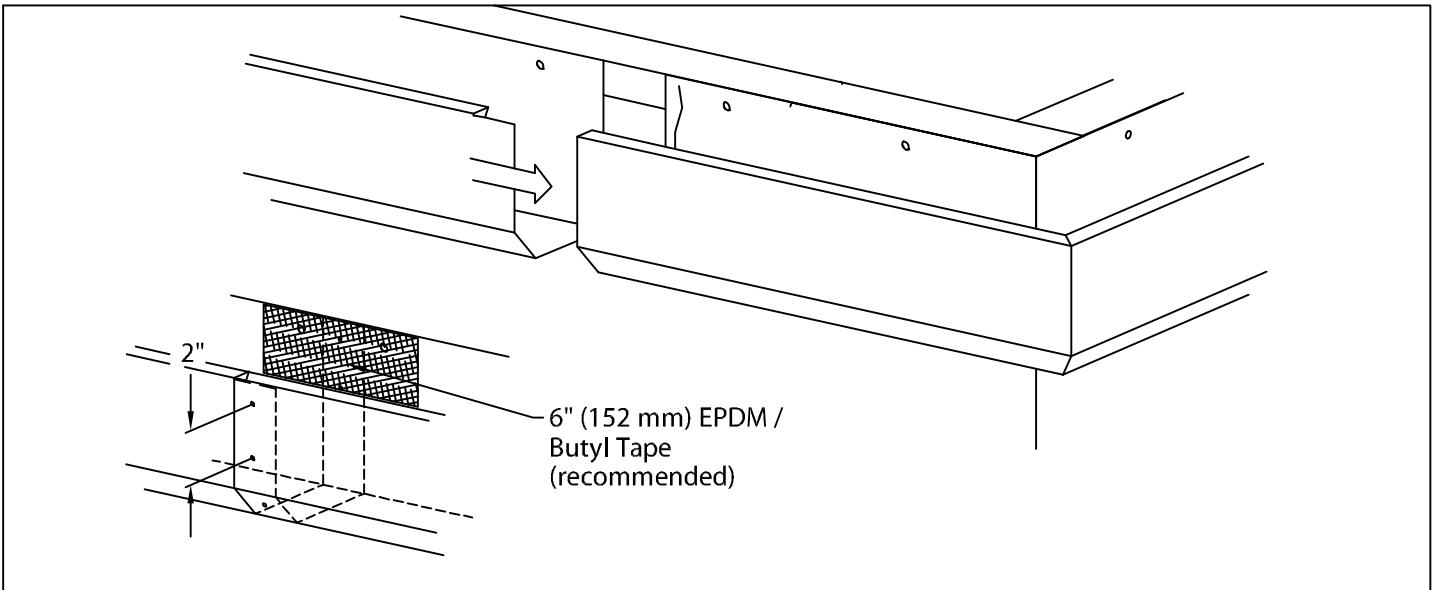
Install miter units at locations shown on plans. Fasten to nailer through pre-slotted holes @ 12" (305 mm) O.C. using provided 1 1/4" (32 mm) galv. roofing nails.

Apply a heavy bead of Dow All-Purpose Sealant to the inside of each miter end as shown.

DOW INDUSTRIAL GUTTER

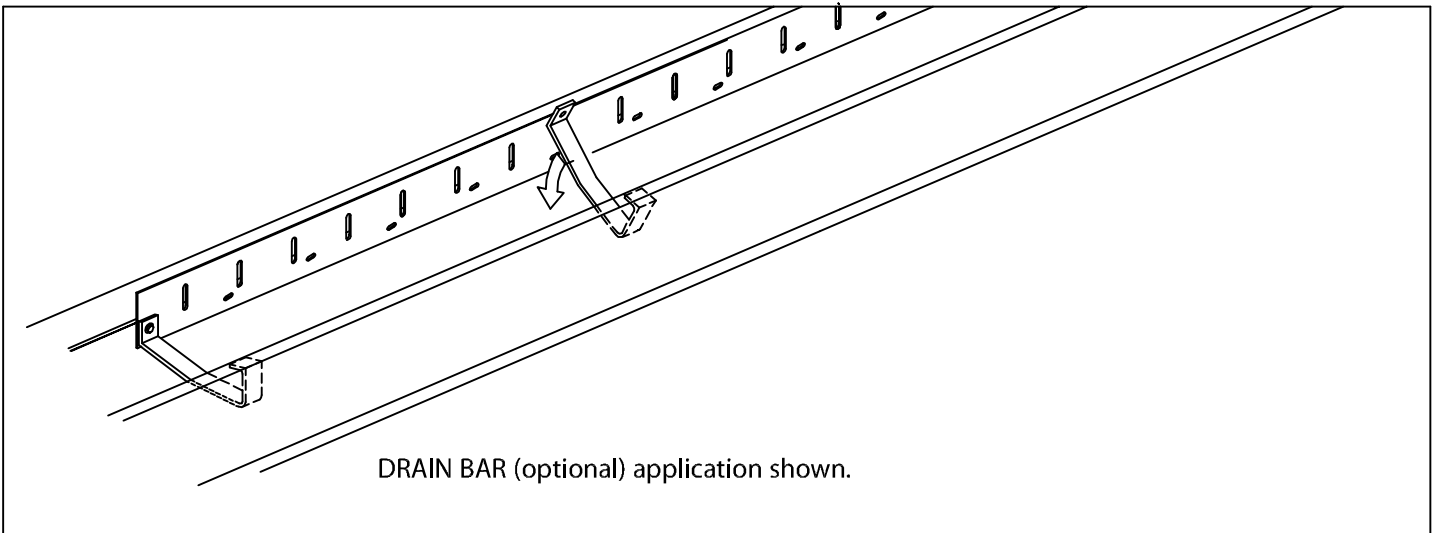
IG-1, IG-2 OR IG-B VERSION

INSTALLATION INSTRUCTIONS



STEP 3. GUTTER INSTALLATION

Install gutter sections from right to left as seen from roof. Insert notched end of gutter section into open end with applied sealant for a distance of 2" (51 mm). Rivet assembled sections at lap joint 2" (51 mm) o.c. Field notch miter ends and/or expansion joints as required. Nail gutter sections to nailer at 12" (305 mm) O.C. using provided 1 1/4" (32 mm) galv. roofing nails. Dow Roofing Systems recommends the application of a 6" (152 mm) wide EPDM / Butyl pressure sensitive tape centered over the lap joint.



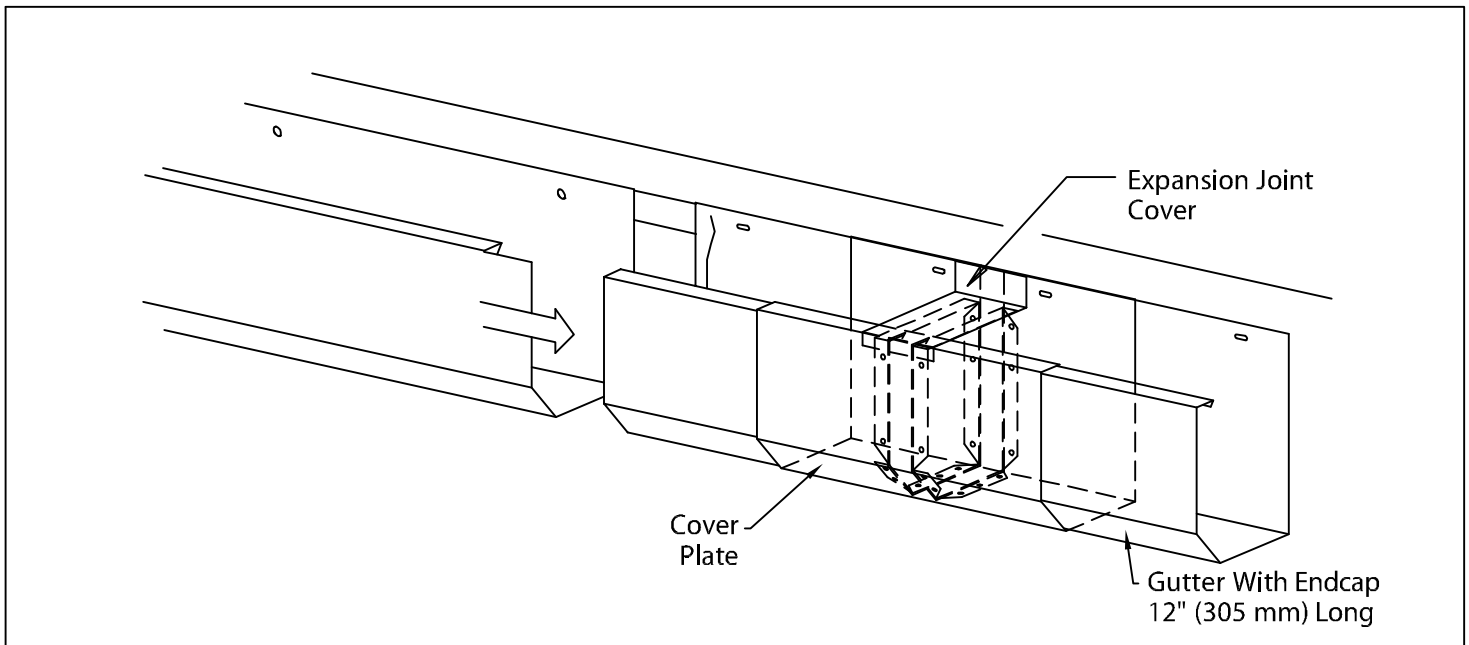
STEP 4. STRAP INSTALLATION

Hook strap under leading edge of gutter and rotate into place. Fasten strap @ 30" (762 mm) O.C. using a provided #9 x 2" (51 mm) stainless steel fastener through back side of gutter into wood nailer.

DOW INDUSTRIAL GUTTER

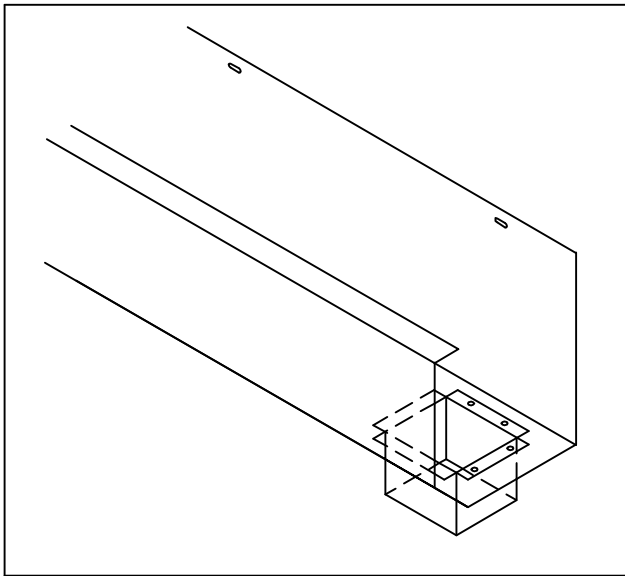
IG-1, IG-2 OR IG-B VERSION

INSTALLATION INSTRUCTIONS



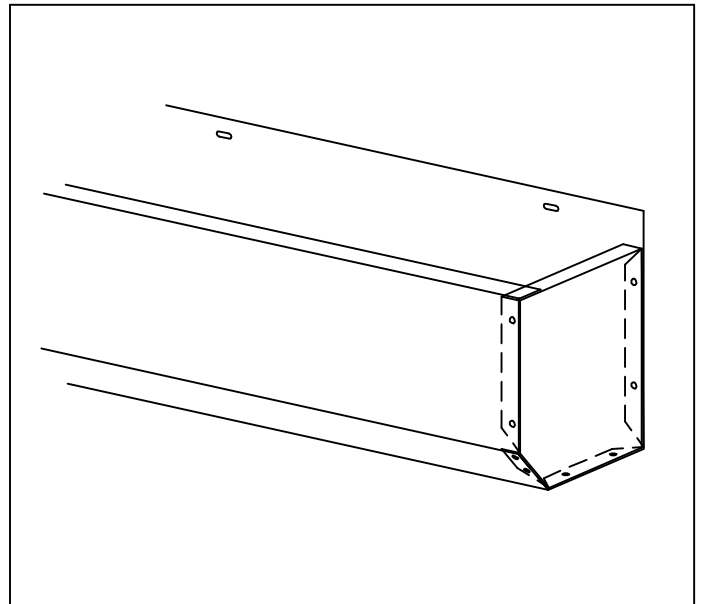
STEP 5. EXPANSION JOINT INSTALLATION (WHERE NECESSARY)

Install expansion joints in locations as specified on roof plans or at a maximum of 48'-0" (1.22 m). Nail into place as per Step #3.



STEP 6. OUTLET INSTALLATION

Determine outlet locations and field cut hole in a neat workmanlike manner. Insert aluminum outlet, fasten with 2 rivets in each flange and seal, with Dow All-Purpose Sealant.



STEP 7. END CAP INSTALLATION

Install end caps at all terminations. Field rivet at 2" (51 mm) O.C. and seal, with Dow All-Purpose Sealant.