

SECUREEDGE 200 NON-WELDED RADIUS DRIP EDGE

WITH CONTINUOUS CLEAT

CONVEX RADIUS

PROVIDING A RADIUS

THE RADIUS MAY BE PROVIDED IN ONE OF TWO METHODS:

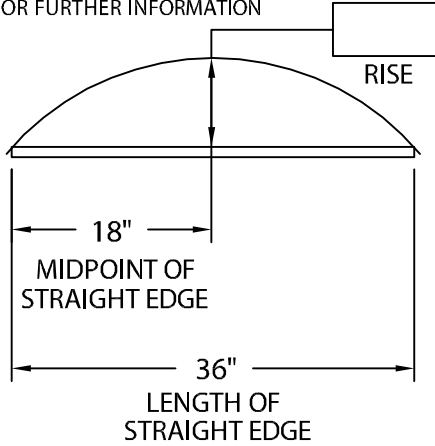
1.) THE ACTUAL KNOWN RADIUS IS



OR

2.) FIELD CONDITION MEASUREMENTS

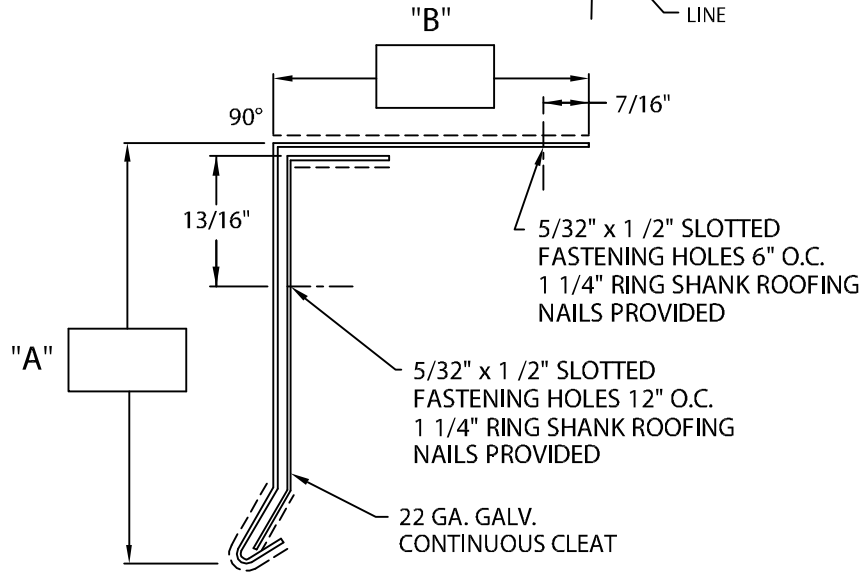
NOTE: REFER TO ATTACHED WORKSHEET FOR FURTHER INFORMATION



NOTE: CHECK MEASUREMENTS ALONG ENTIRE RADIUS.

DETAIL A

----- INDICATES AREAS THAT WILL BE SLIT AS NEEDED TO ACCOMMODATE RADIUS



- NOTES:**
- 6" wide concealed splice plates provided.
 - Concealed splice plate must be field caulked to prevent water entry.

Fabrication will proceed only after receipt of signed print approval.

Print Approval:

Architect and/or contractor shall verify all dimensions, sizes and quantities. All products to be installed in strict accordance with Carlisle SynTec, Inc.'s printed instructions.

Approved by: _____

Date: _____

MATERIAL:

___ 24 Ga. Galv. ___ .050" Aluminum

___ .040" Aluminum ___ .063" Aluminum

Color: _____

Finish: _____

QUANTITIES:

_____ Lineal Feet (12'-0" (3.65 m) Lengths)

PROJECT:

ARCHITECT:

ROOFING CONTRACTOR:

REPRESENTATIVE/DISTRIBUTOR:

Customer Service
866-458-3537
(Metal-Era)



DATE: 04/07/17

DRN BY: JJC

CKD BY: SAK

SHT.# ___ OF ___

DWG# 15010-4701

F