

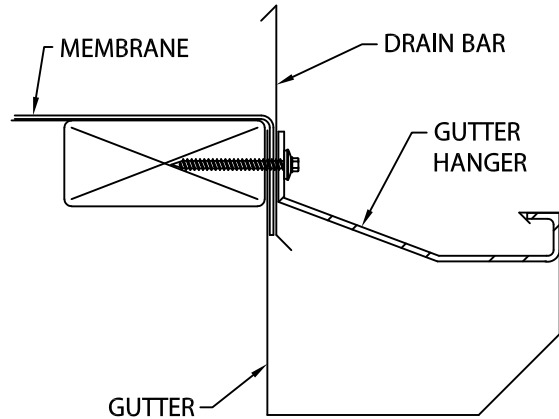
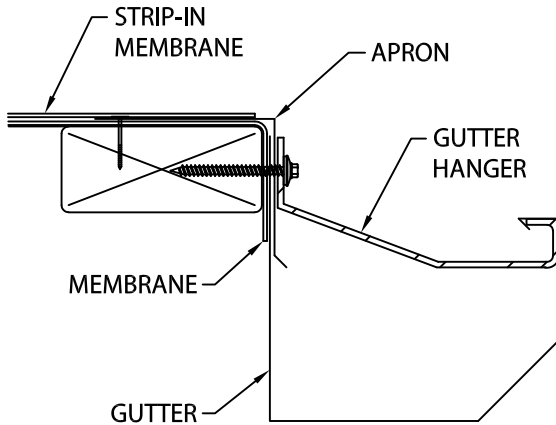
SEAL-TITE GOLD INDUSTRIAL GUTTER

IGG-1, IGG-2, IGG-3 OR IGG-B VERSION WITH WIND STRAPS

INSTALLATION INSTRUCTIONS

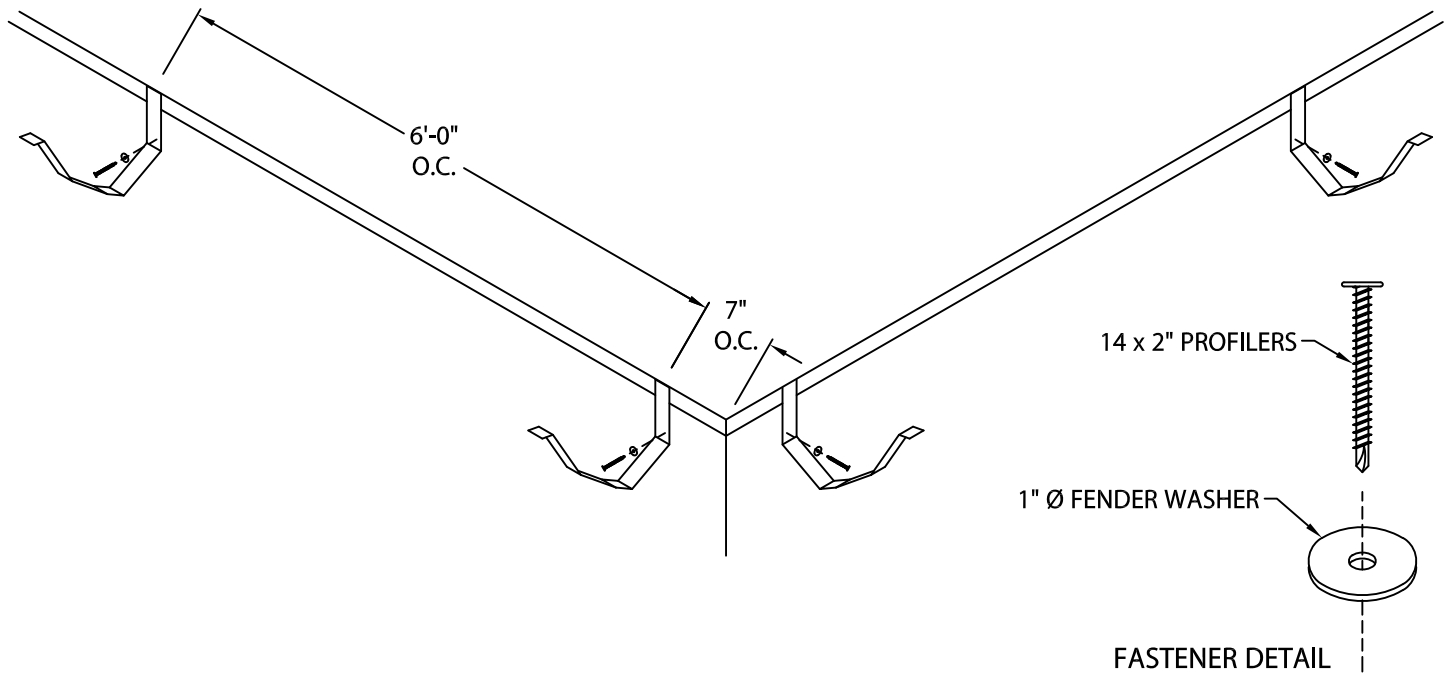
NOTE: EITHER TERMINATION BAR, GRAVEL STOP OR DRIP EDGE MUST BE USED TO RECEIVE <FM> APPROVAL.

TYPICAL MEMBRANE OPTIONS



STEP 1. MEMBRANE INSTALLATION

REVIEW CAREFULLY AND FOLLOW PRIMARY ROOF MATERIAL MANUFACTURER'S RECOMMENDATIONS, AND ARCHITECT'S DETAILS FOR INSTALLING ROOF MEMBRANES IN CONJUNCTION WITH THIS GUTTER SYSTEM.



STEP 2. WIND STRAPS

START BY FASTENING WIND STRAPS TO WALL 7" O.C. FROM CORNER WITH PROVIDED 14 x 2" PROFILERS AND FENDER WASHERS. CONTINUE INSTALLING WIND STRAPS AT 6'-0" O.C.



Phone: 800-558-2162
Fax: 800-373-9156
www.metalera.com

DATE: 03/21/25
DRN BY: JJC
CKD BY: MM

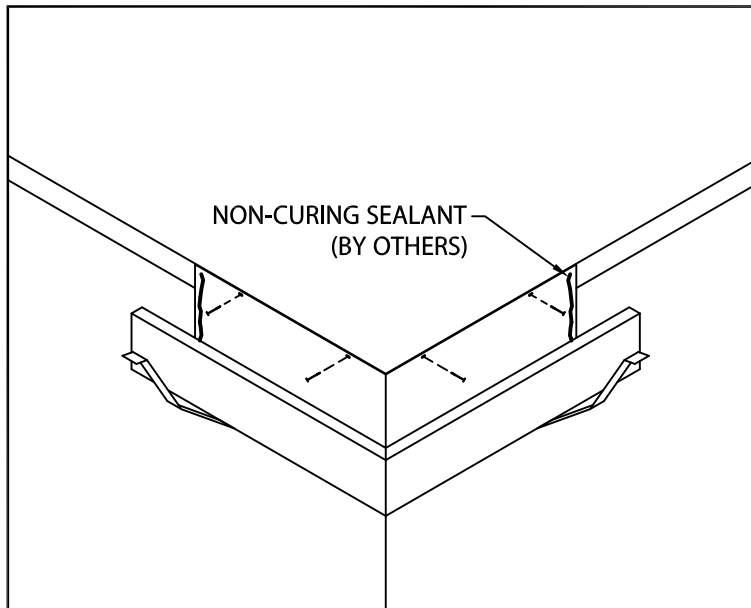
SHT.# 1 OF 5
DWG# 11112-26122

E

SEAL-TITE GOLD INDUSTRIAL GUTTER

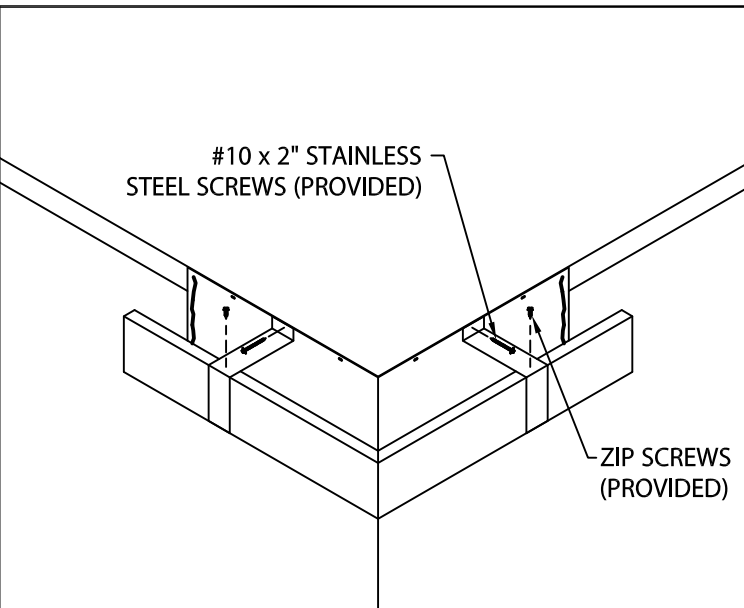
IGG-1, IGG-2, IGG-3 OR IGG-B VERSION WITH WIND STRAPS

INSTALLATION INSTRUCTIONS



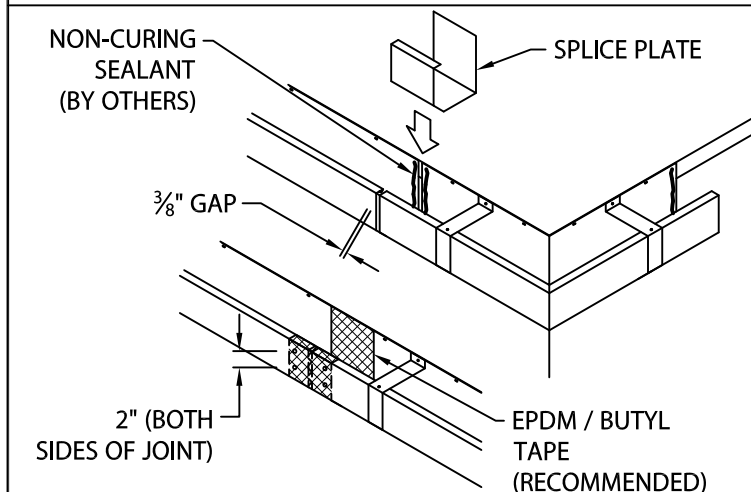
STEP 3. MITERS

INSTALL MITERS AT LOCATIONS SHOWN ON PLANS. WRAP WIND STRAPS AROUND MITERS. FASTEN MITER TO NAILER THROUGH PRE-SLOTTED HOLES USING PROVIDED $1\frac{1}{4}$ " GALVANIZED ROOFING NAILS. APPLY A HEAVY BEAD OF NON-CURING SEALANT TO THE INSIDE OF EACH MITER END AS SHOWN.



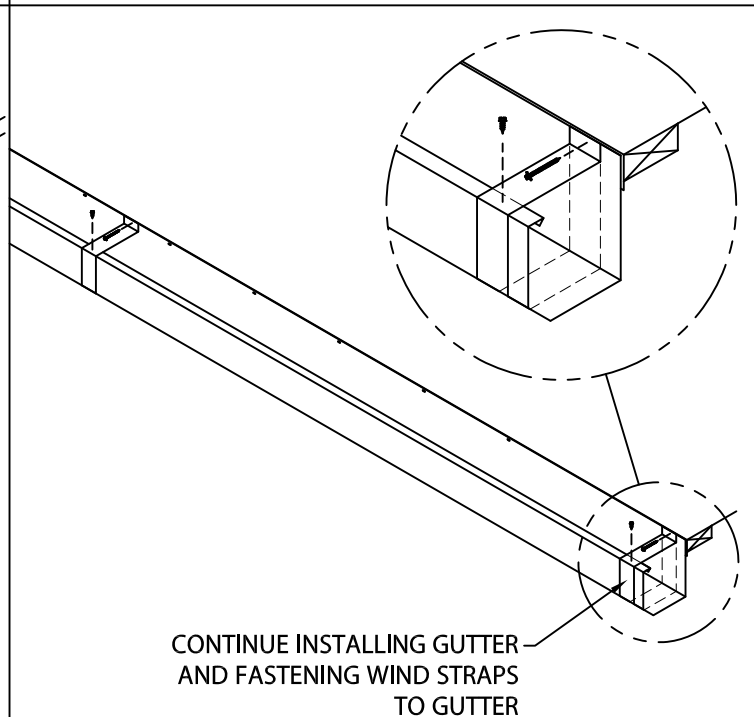
STEP 4. MITER WIND STRAPS

WRAP WIND STRAPS AROUND TOP OF GUTTER AND FASTEN TO GUTTER WITH PROVIDED #10 x 2" STAINLESS STEEL FASTENERS AND ZIP SCREWS.



STEP 5. GUTTER

INSTALL GUTTER SECTIONS FROM RIGHT TO LEFT AS SEEN FROM ROOF. APPLY A HEAVY BEAD OF NON-CURING SEALANT TO INSIDE LENGTH OF GUTTER. LEAVE A $\frac{3}{8}$ " GAP AT SPLICE JOINT. PLACE 6" WIDE SPLICE PLATE AT JOINT. RIVET SECTIONS WITH PROVIDED $\frac{7}{8}$ " STAINLESS STEEL POP RIVETS AT SPLICE JOINT 2" O.C. AS SHOWN. NAIL GUTTER TO NAILER AT 12" O.C. USING PROVIDED $1\frac{1}{4}$ " RING SHANK ROOFING NAILS. METAL-ERA RECOMMENDS THE APPLICATION OF EPDM / BUTYL PRESSURE SENSITIVE TAPE CENTERED OVER THE SPLICE PLATE AND LAPPING GUTTER SECTIONS A MINIMUM OF 1".



STEP 6. WIND STRAPS

CONTINUE INSTALLING GUTTER AND FASTENING WIND STRAPS TO GUTTER.



Phone: 800-558-2162
Fax: 800-373-9156
www.metalera.com

DATE: 03/21/25
DRN BY: JJC
CKD BY: MM

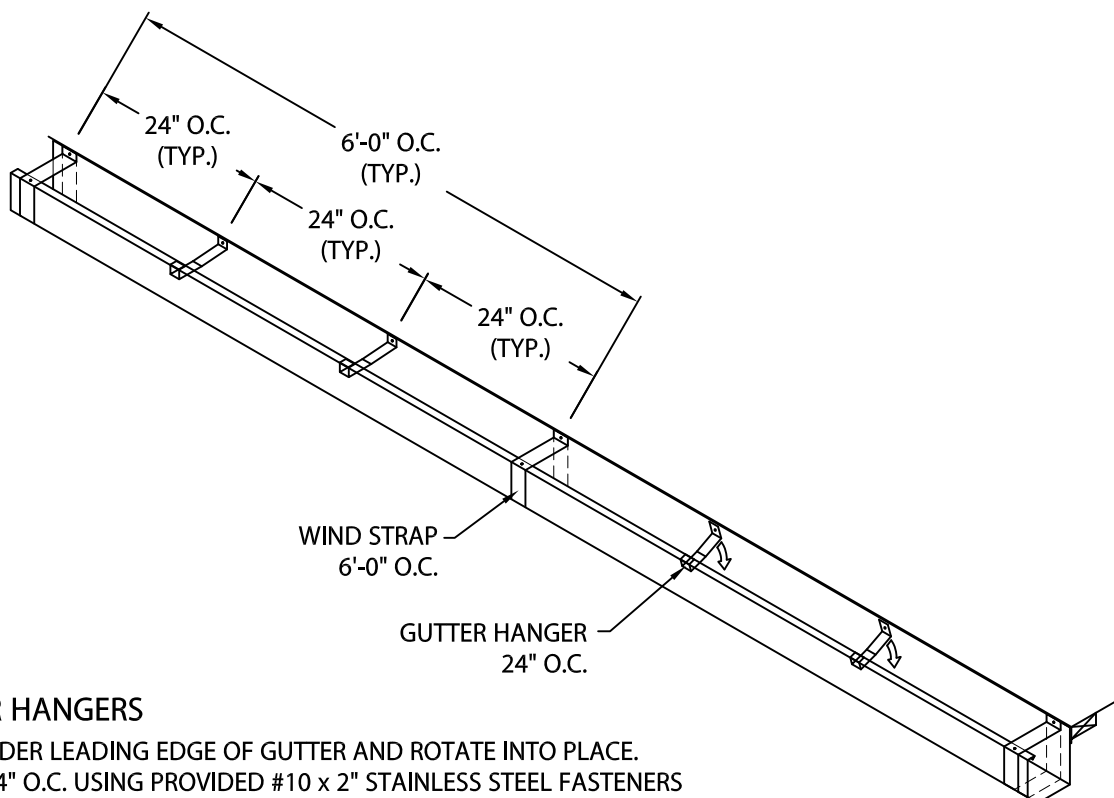
SHT.# 2 OF 5
DWG# 11112-26122

E

SEAL-TITE GOLD INDUSTRIAL GUTTER

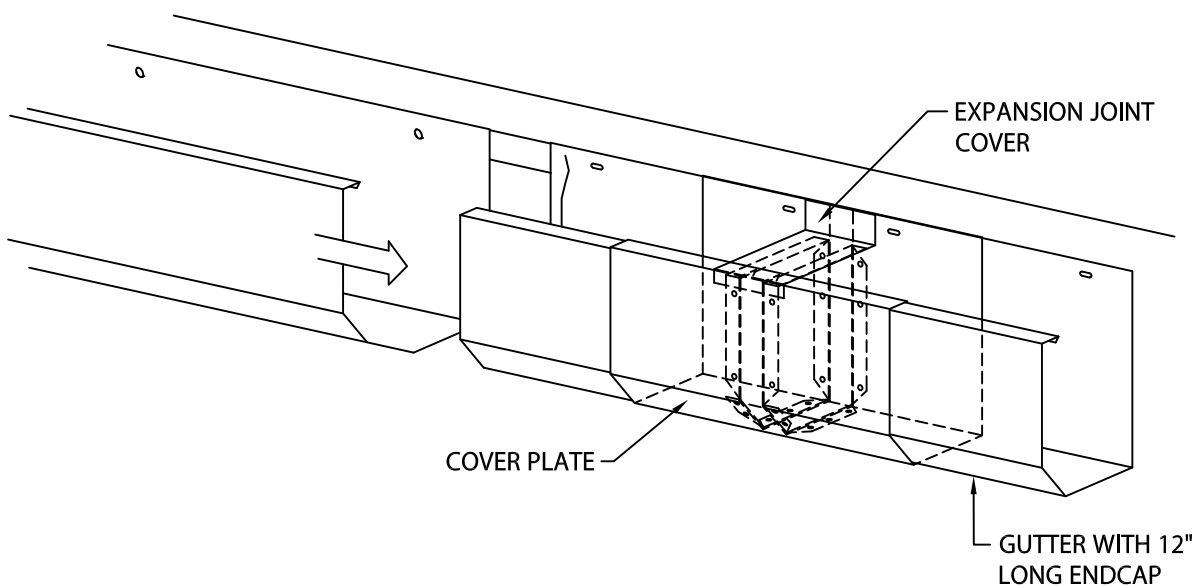
IGG-1, IGG-2, IGG-3 OR IGG-B VERSION WITH WIND STRAPS

INSTALLATION INSTRUCTIONS



STEP 7. GUTTER HANGERS

HOOK HANGER UNDER LEADING EDGE OF GUTTER AND ROTATE INTO PLACE.
FASTEN HANGER 24" O.C. USING PROVIDED #10 x 2" STAINLESS STEEL FASTENERS
THROUGH BACK SIDE OF GUTTER INTO WOOD NAILER.



STEP 8. EXPANSION JOINT INSTALLATION (WHERE NECESSARY)

INSTALL EXPANSION JOINTS IN LOCATIONS AS SPECIFIED ON ROOF PLANS OR
AT A MAXIMUM OF 48'-0". NAIL INTO PLACE AS PER STEP 5.



Phone: 800-558-2162
Fax: 800-373-9156
www.metalera.com

DATE: 03/21/25
DRN BY: JJC
CKD BY: MM

SHT.# 3 OF 5

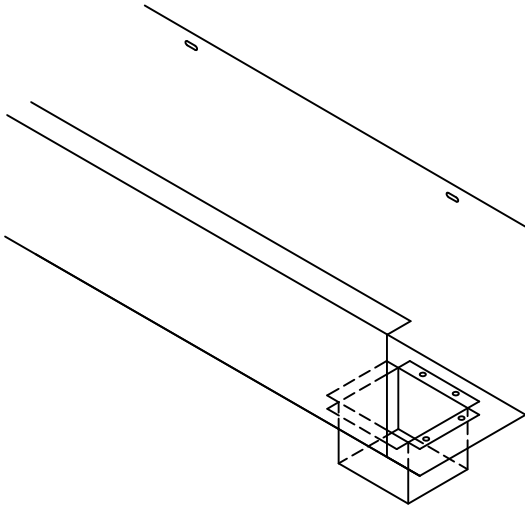
DWG# 11112-26122

E

SEAL-TITE GOLD INDUSTRIAL GUTTER

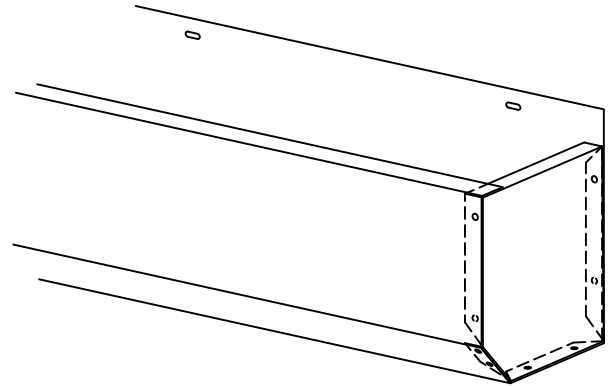
IGG-1, IGG-2, IGG-3 OR IGG-B VERSION WITH WIND STRAPS

INSTALLATION INSTRUCTIONS



STEP 9. OUTLET INSTALLATION

DETERMINE OUTLET LOCATIONS AND FIELD CUT HOLE IN A NEAT WORKMANLIKE MANNER. INSERT ALUMINUM OUTLET, FASTEN WITH PROVIDED $\frac{1}{8}$ " STAINLESS STEEL POP RIVETS, 2" O.C. AND SEAL WITH NON-CURING SEALANT.



STEP 10. END CAP INSTALLATION

INSTALL ENDCAPS AT ALL TERMINATIONS. FIELD RIVET WITH PROVIDED $\frac{1}{8}$ " STAINLESS STEEL POP RIVETS AT 2" O.C. AND SEAL WITH NON-CURING SEALANT.



Phone: 800-558-2162
Fax: 800-373-9156
www.metalera.com

DATE: 03/21/25
DRN BY: JJC
CKD BY: MM

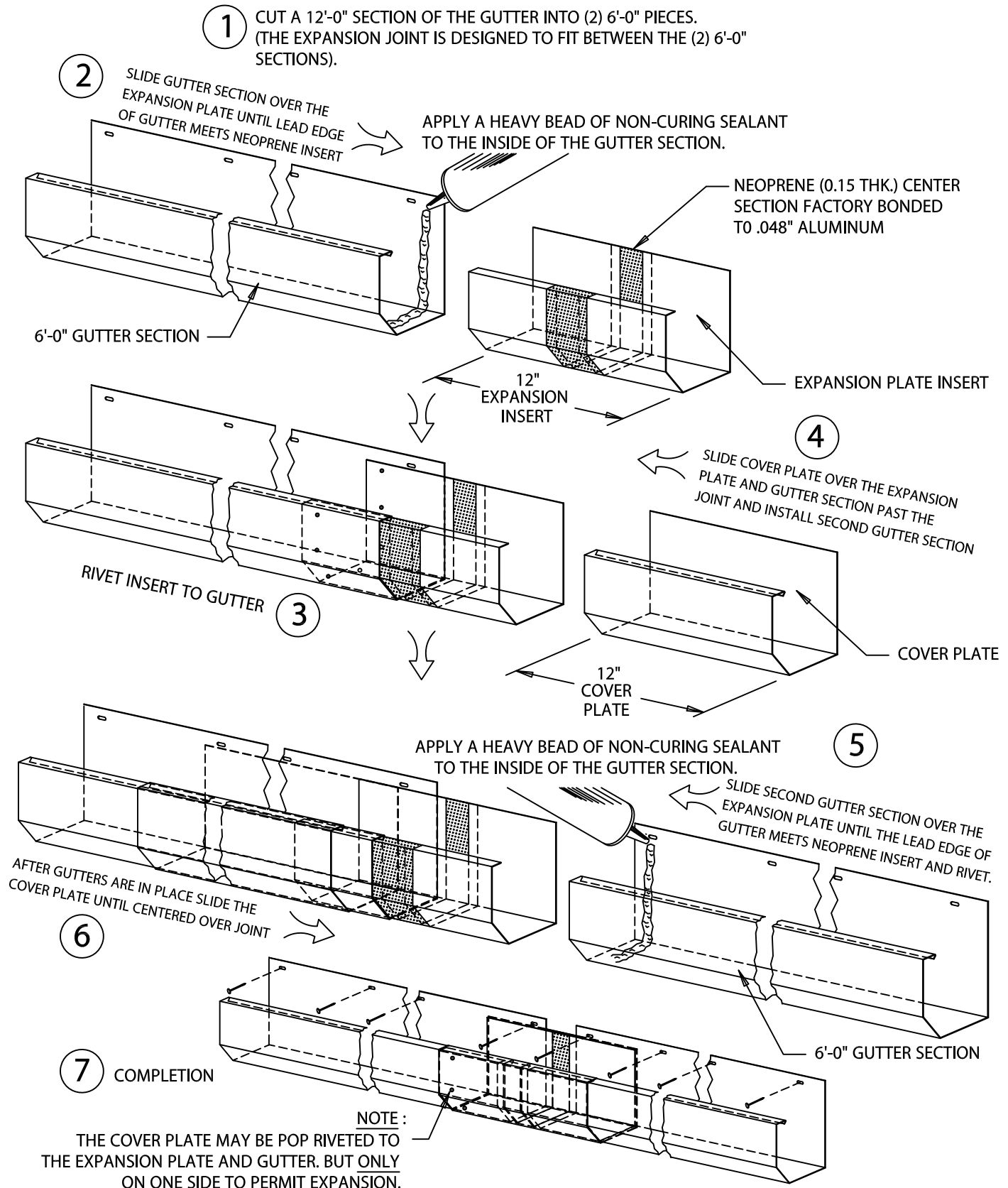
SHT.# 4 OF 5
DWG# 11112-26122

E

SEAL-TITE GOLD INDUSTRIAL GUTTER

IGG-1, IGG-2, IGG-3 OR IGG-B VERSION WITH WIND STRAPS

INSTALLATION INSTRUCTIONS



Phone: 800-558-2162
Fax: 800-373-9156
www.metalera.com

DATE: 03/21/25
DRN BY: JJC
CKD BY: MM

SHT.# 5 OF 5
DWG# 11112-26122

E