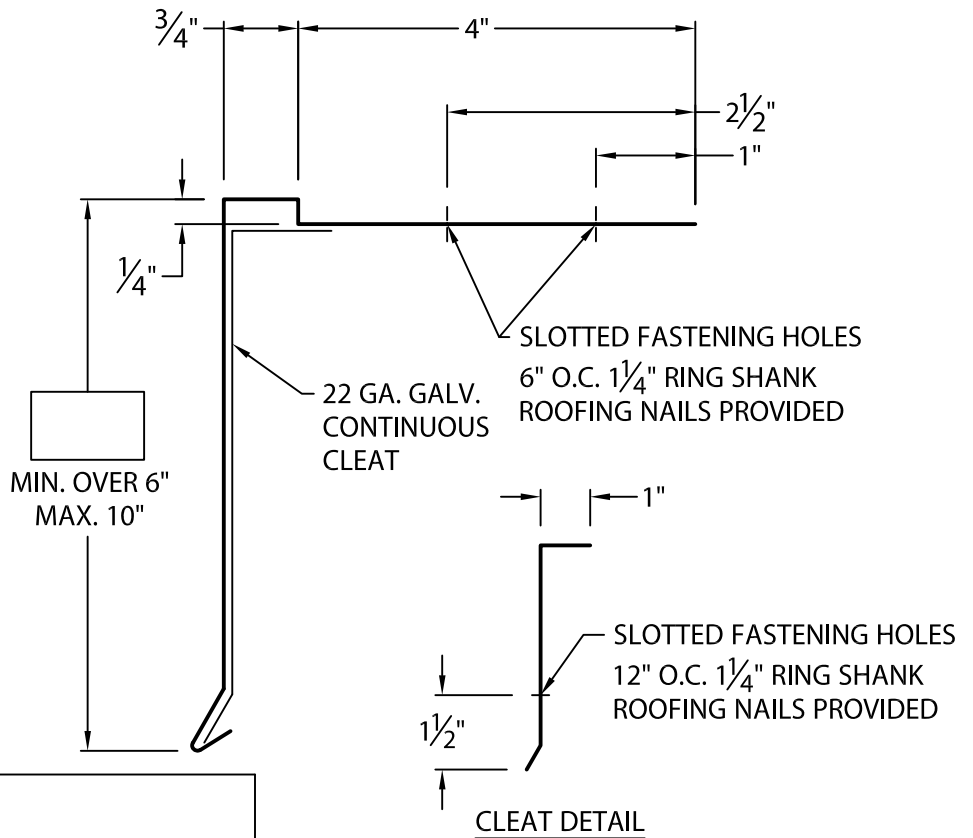
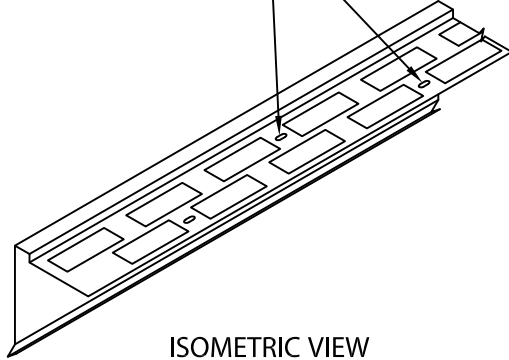


SOPREMA FLASH-THRU DRIP EDGE

OVER 6" TO 10" FACE HEIGHT, BUILT-UP OR MODIFIED VERSION

WITH CONTINUOUS CLEAT

$\frac{5}{32}$ " x $\frac{1}{2}$ " SLOTTED
HOLES STAGGERED
6" O.C.



NOTES:

- INCLUDES 6" WIDE CONCEALED SPLICE PLATES.
- CONCEALED SPLICE PLATE MUST BE FIELD CAULKED TO PREVENT WATER ENTRY.
- UNLESS OTHERWISE NOTED, FABRICATION OF MITERS AND ACCESSORIES ARE FURNISHED STANDARD UTILIZING A NON-PENETRATING QUICKLOCK JOINT, THEN FACTORY SEALED WATERTIGHT.

Fabrication will proceed only after receipt of signed print approval.

Print Approval:

Architect and/or contractor shall verify all dimensions, sizes and quantities. All products to be installed in strict accordance with SOPREMA's printed instructions.

Approved by: _____

Date: _____

WELDED MITERS AND ACCESSORIES

CHECK ONE ☐ REQUIRED (SURCHARGE) ☐ NOT APPLICABLE

MATERIAL:

____ 24 GA. GALVANIZED STEEL
____ .040" ALUMINUM COLOR: _____
____ .050" ALUMINUM
____ .063" ALUMINUM FINISH: _____
____ OTHER _____

QUANTITIES:

____ LINEAL FEET (12'-0" LENGTHS)
____ OUTSIDE MITERS @ 90°
____ INSIDE MITERS @ 90°

FOR NON-90 MITERS SEE PRINT APPROVAL #33010-20199

PROJECT:

ARCHITECT:

ROOFING CONTRACTOR:

REPRESENTATIVE/DISTRIBUTOR:

800-356-3521

www.soprema.us

310 Quadral Dr. Wadsworth, OH 44281

f: 330-334-6257



DATE: 12/05/19

DRN BY: JJC

CKD BY: JAI

SHT.# ____ OF ____

DWG# 33010-25547

E