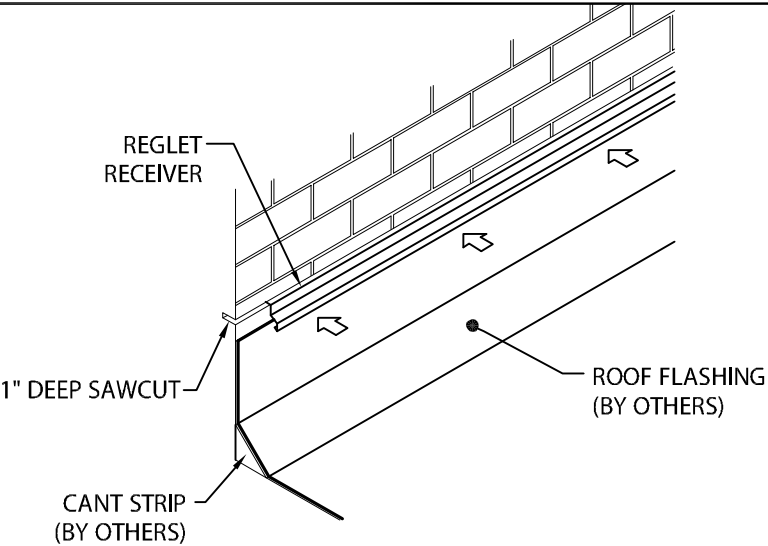


DERBIGUM COUNTER-FLASH 2 PC COUNTERFLASHING

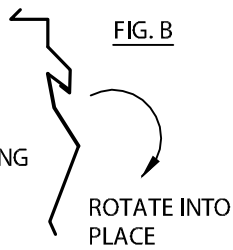
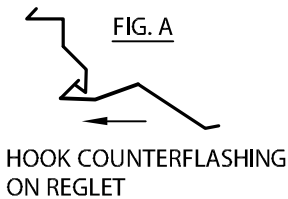
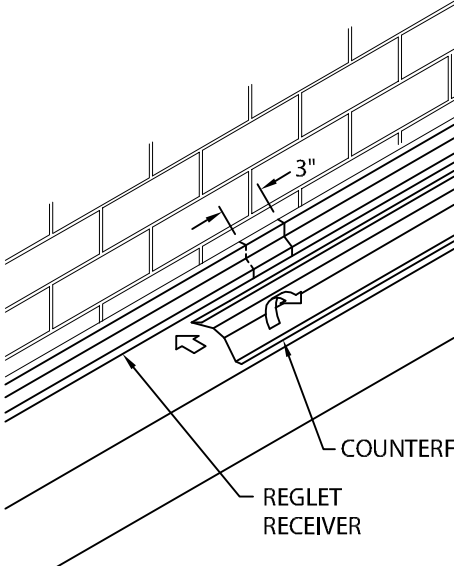
REGLET VERSION

INSTALLATION INSTRUCTIONS

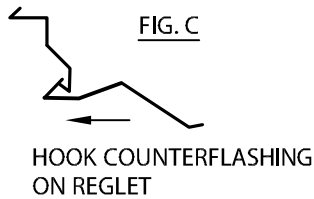
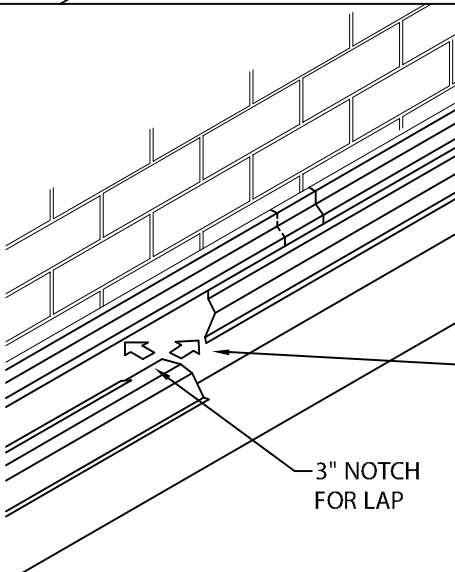
STEP 1 - REGLET RECEIVER
INSTALL REGLET RECEIVER INTO 1" DEEP SAWCUT OR MORTAR JOINT. SAWCUT SHALL BE CUT TRUE AND LEVEL A MINIMUM OF 7" ABOVE THE HIGH POINT OF THE CANT STRIP (IF USED). INSTALL FROM RIGHT TO LEFT. LAP ENDS OF REGLET 3" AT FACTORY NOTCHED END.
NOTE: REMOVE PROTECTIVE FILM IMMEDIATELY.



STEP 2 - COUNTERFLASHING
PRIOR TO INSTALLING COUNTERFLASHING, REMOVE PROTECTIVE FILM. HOOK COUNTERFLASHING ONTO RECEIVER AS SHOWN IN FIG. A. ROTATE DOWNWARD INTO PLACE (FIG. B). STAGGER REGLET RECEIVER AND COUNTERFLASHING JOINTS ACCORDINGLY.



STEP 3 - COUNTERFLASHING
REMOVE PROTECTIVE FILM. HOOK COUNTERFLASHING ONTO RECEIVER AS SHOWN IN FIG. C. SLIDE COUNTERFLASHING 3" AT LAP JOINT OVER PREVIOUSLY INSTALLED PIECE. ROTATE DOWNWARD INTO PLACE AS SHOWN IN STEP 2.



DERBIGUM®
MAKING BUILDINGS SMART

Customer Service
1-800-727-9872

DATE: 02/11/17
DRN BY: JJC
CKD BY: SAK

SHT.# 1 OF 2
DWG# 20115-25702

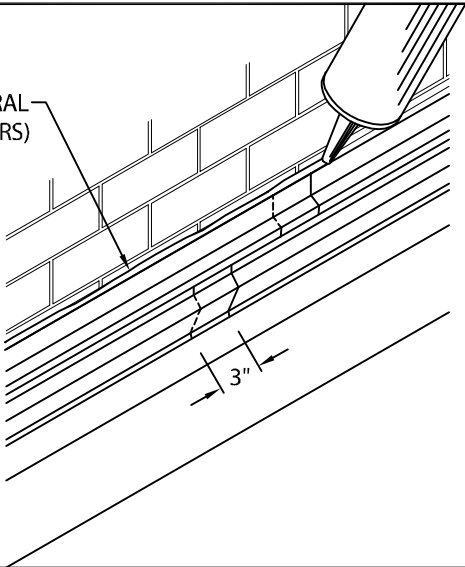
A

DERBIGUM COUNTER-FLASH 2 PC COUNTERFLASHING

REGLET VERSION

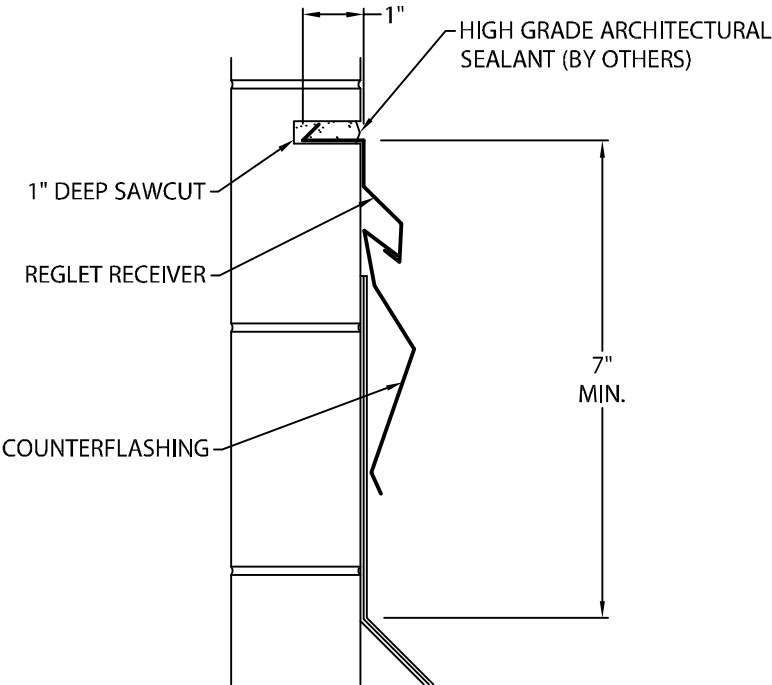
INSTALLATION INSTRUCTIONS

HIGH GRADE ARCHITECTURAL
SEALANT (BY OTHERS)



STEP 4 - COMPLETION
APPLY A CONTINUOUS BEAD OF HIGH
GRADE ARCHITECTURAL SEALANT IN
CAULK CUP OF REGLET TO COMPLETE
INSTALLATION.

TYPICAL INSTALLATION



DERBIGUM®
MAKING BUILDINGS SMART

Customer Service
1-800-727-9872

DATE: 02/11/17
DRN BY: JJC
CKD BY: SAK

SHT.# 2 OF 2

DWG# 20115-25702

A