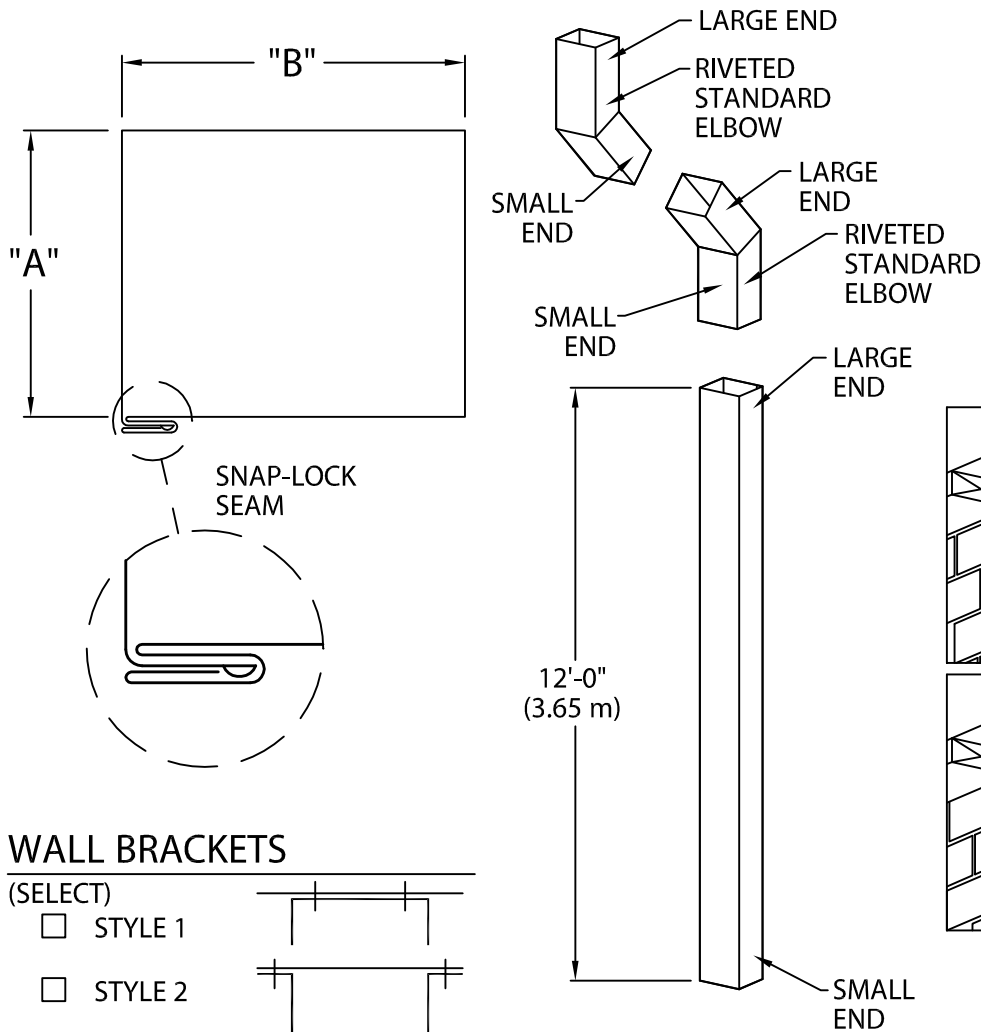


INDUSTRIAL DOWNSPOUT

CLOSED FACE VERSION



Fabrication will proceed only after receipt of signed print approval.

Print Approval:

Architect and/or contractor shall verify all dimensions, sizes and quantities. All products to be installed in strict accordance with Dow Roofing Systems' printed instructions.

Approved by: _____

Date: _____

MATERIAL:

___ 24 Ga. (0.65 mm) Steel

___ .040" (1.01 mm) Alum.

___ .050" (1.27 mm) Alum.

___ .063" (1.60 mm) Alum.

___ Other : _____

Color: _____ Finish: _____

QUANTITIES:

_____ Lineal Feet 12'-0" (3.65 m) Size _____" x _____"

_____ Outlets

_____ Standard Elbows (_____°) Style: A ___ B ___

PROJECT:

ARCHITECT:

ROOFING CONTRACTOR:

REPRESENTATIVE/DISTRIBUTOR:

Corporate Offices
Dow Roofing Systems
Nine Sullivan Road
Holyoke, MA 01040
P: 800-621-ROOF



ROOFING SYSTEMS

DATE: 01/30/09

DRN BY: JJC

CKD BY: SAK

SHT.# _____ OF _____

DWG# 12013-4047

D