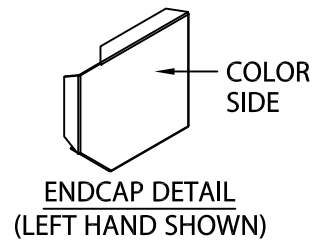
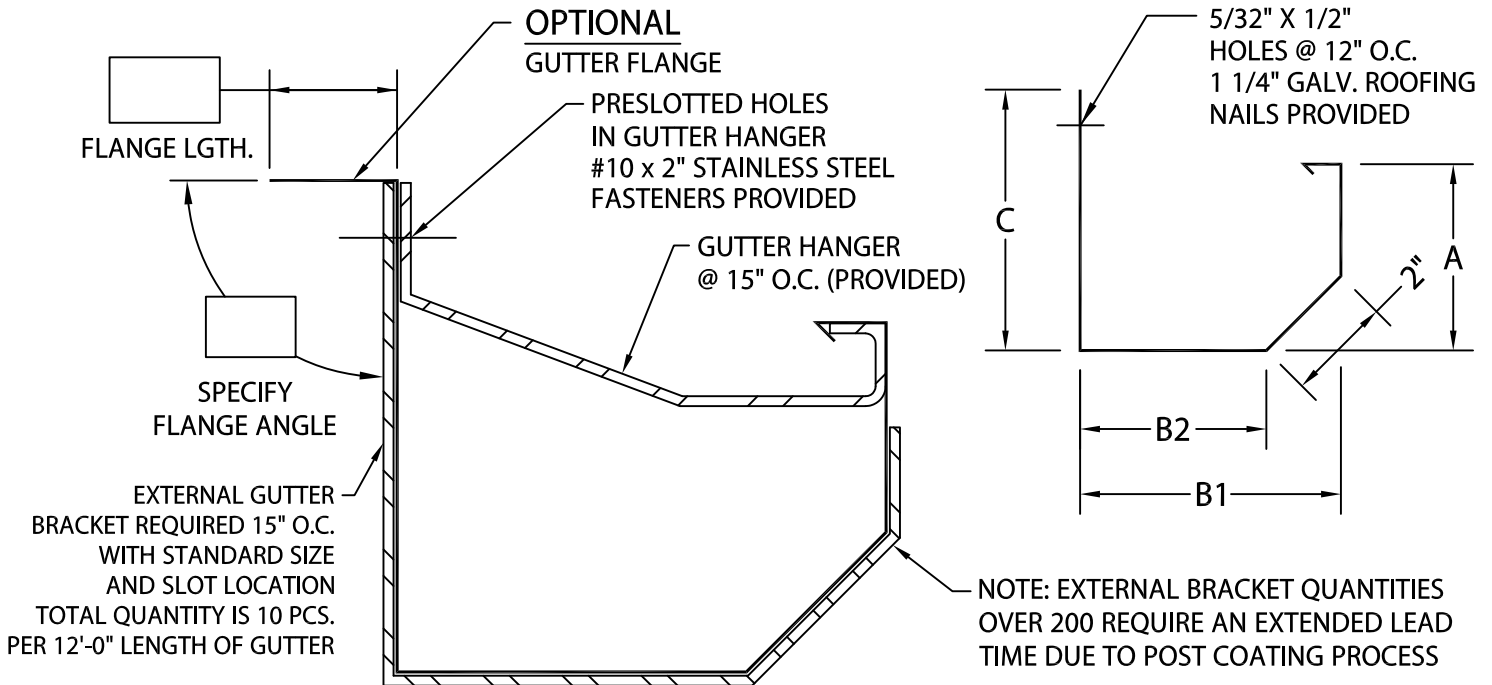


LG GUTTER

IG-2 VERSION



PRODUCT ID #	C	B1	B2	A	HANGER
<input type="checkbox"/> IG2-C10	10"	9"	7 9/16"	9"	2" x .100 Mill
<input type="checkbox"/> IG2-C11	11"	10"	8 9/16"	10"	2" x .100 Mill
<input type="checkbox"/> IG2-C12	12"	11"	9 9/16"	11"	2" x .100 Mill
<input type="checkbox"/> IG2-C13	13"	12"	10 9/16"	12"	2" x .100 Mill

NOTES:

- MAXIMUM DOWNSPOUT DIMENSION NOT TO EXCEED "B2" MINUS 9/16".
- 2" LAP JOINTS PROVIDED.
- 1/8" STAINLESS STEEL POP RIVETS PROVIDED.
- UNLESS OTHERWISE NOTED, FABRICATION OF MITERS ARE FURNISHED STANDARD UTILIZING A NON-PENETRATING QUICKLOCK JOINT, THEN FACTORY SEALED WATERTIGHT.
- WELDED ACCESSORIES REQUIRE A MINIMUM MATERIAL THICKNESS OF .050".

MATERIAL:

- ___ 22 GA. GALV. STEEL
 - ___ .050" ALUMINUM
 - ___ .063" ALUMINUM
 - ___ OTHER _____
- (NOT AVAILABLE IN 24 GA. GALV. STEEL OR .040" ALUMINUM)

COLOR: _____ FINISH: _____

QUANTITIES:

- ___ LINEAL FEET 12'-0" LENGTHS
 - ___ OUTSIDE MITERS @ 90°
 - ___ INSIDE MITERS @ 90°
 - ___ ENDCAPS: RIGHT _____ LEFT _____
 - ___ EXPANSION JOINTS
 - ___ STYLE "1" _____ STYLE "2" _____
- SPECIFY MITER TYPE:
- WELDED
 - QUICKLOCK

FOR NON-90 MITERS SEE PRINT APPROVAL #11012-10010

Fabrication will proceed only after receipt of signed print approval.

Print Approval:

Architect and/or contractor shall verify all dimensions, sizes and quantities. All products to be installed in strict accordance with Metal-Era's printed instructions.

Approved by: _____

Date: _____

PROJECT:

ARCHITECT:

ROOFING CONTRACTOR:

REPRESENTATIVE/DISTRIBUTOR:

Corporate Offices, Manufacturing
1600 Airport Road; Waukesha, WI 53188
Phone: 800-558-2162
Fax: 800-373-9156
www.metalera.com



DATE: 10/04/21

DRN BY: JJC

CKD BY: MM

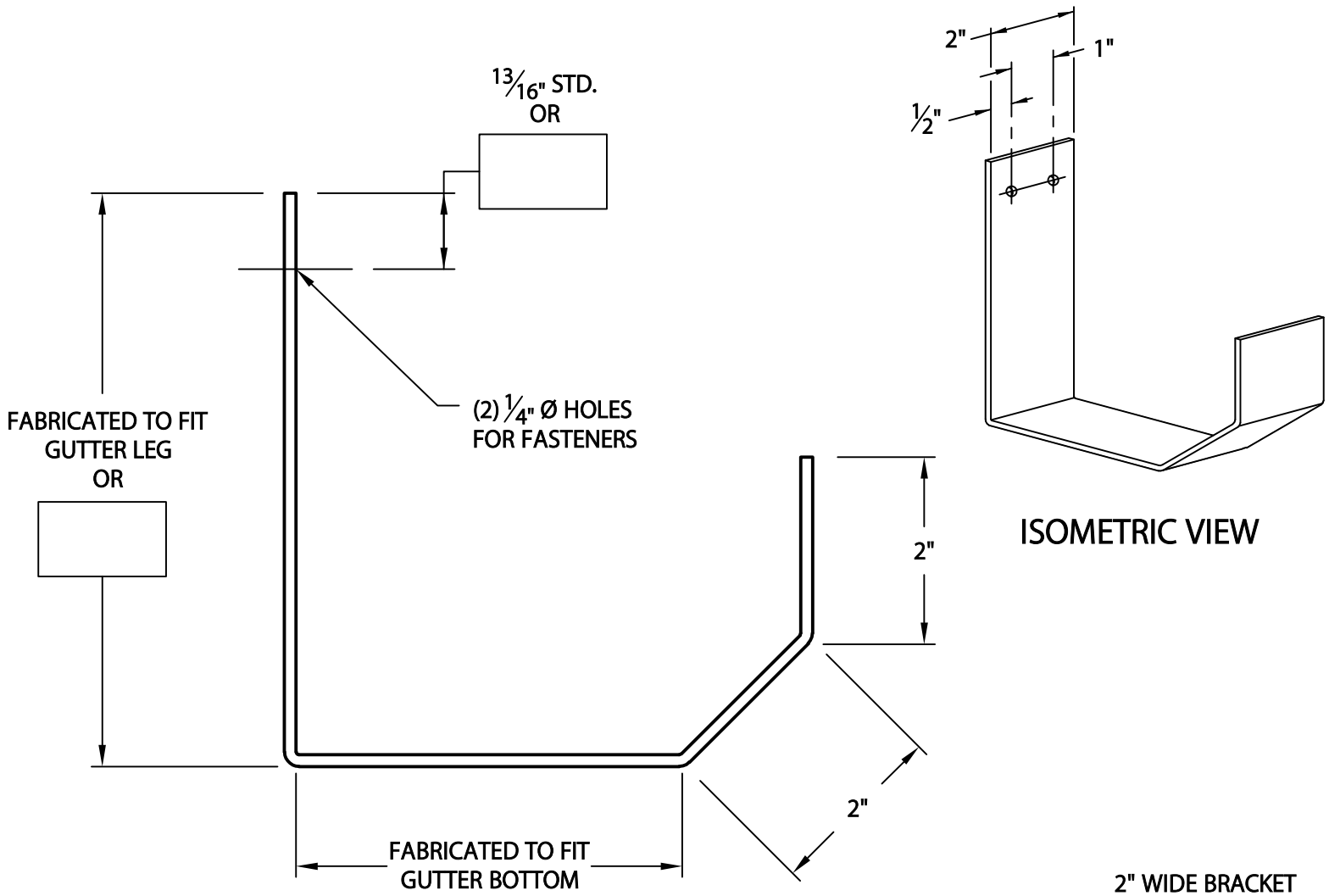
SHT.# _____ OF _____

DWG# 11012-37205

A

EXTERNAL GUTTER BRACKET

IG-2 VERSION



Fabrication will proceed only after receipt of signed print approval.

Print Approval:

Architect and/or contractor shall verify all dimensions, sizes and quantities. All products to be installed in strict accordance with Metal-Era's printed instructions.

Approved by: _____

Date: _____

MATERIAL:

.125" ALUMINUM

COLOR: _____

FINISH: _____

QUANTITIES:

_____ AMOUNT REQUIRED*

*QUANTITIES OVER 200 REQUIRE AN EXTENDED LEAD TIME DUE TO POST COATING PROCESS.

PROJECT:

ARCHITECT:

ROOFING CONTRACTOR:

REPRESENTATIVE/DISTRIBUTOR:

Corporate Offices, Manufacturing
1600 Airport Road; Waukesha, WI 53188
Phone: 800-558-2162
Fax: 800-373-9156
www.metalera.com



DATE: 11/23/21

DRN BY: JJC

CKD BY: MM

SHT.# _____ OF _____

DWG# 11012-1507

E