



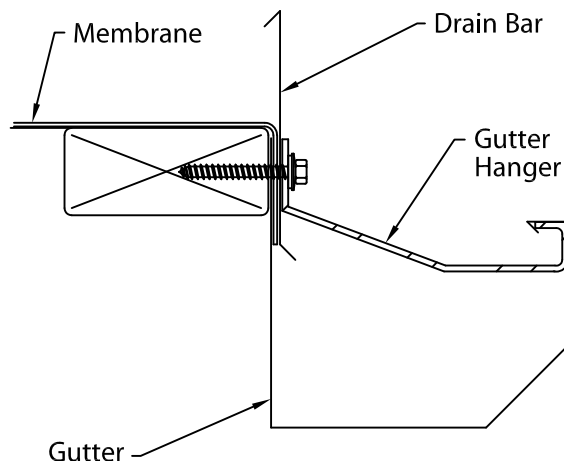
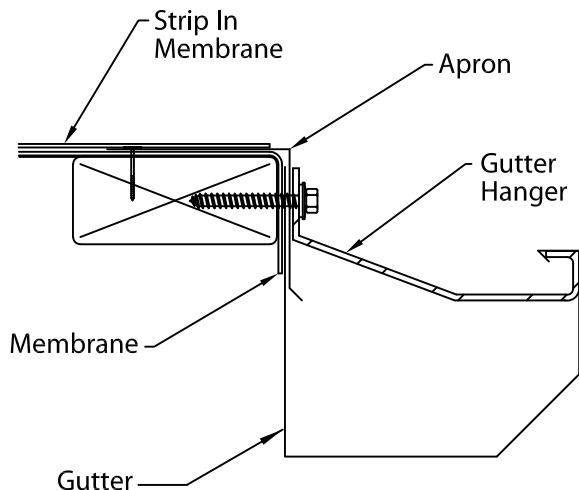
# GENFLEX INDUSTRIAL GUTTER

IG-1, IG-2 OR IG-B VERSION

## INSTALLATION INSTRUCTIONS

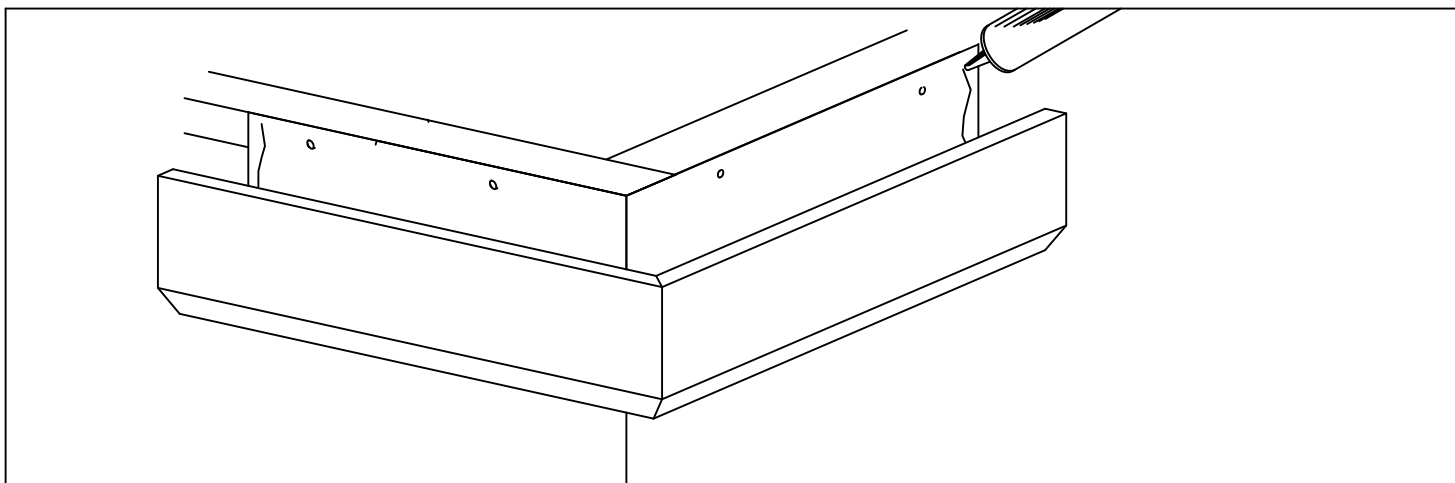
Note: Either Term. Bar, Gravel stop, or Drip edge must be used to receive <FM> approval.

### TYPICAL MEMBRANE OPTIONS



### STEP 1. MEMBRANE INSTALLATION

Review carefully and follow GenFlex's recommendations, and architect's details for installing roof membranes in conjunction with this gutter system.



### STEP 2. MITER INSTALLATION

Install miter units at locations shown on plans. Fasten to nailer through pre-slotted holes @ 12" O.C. using provided 1 1/4" galv. roofing nails (required for FM approval). Apply a heavy bead of non-curing sealant to the inside of each miter end as shown.



Phone: 800-588-2162  
Fax: 800-373-9156  
[www.metalera.com/genflex](http://www.metalera.com/genflex)

DATE: 03/09/21  
DRN BY: JJC  
CKD BY: MM

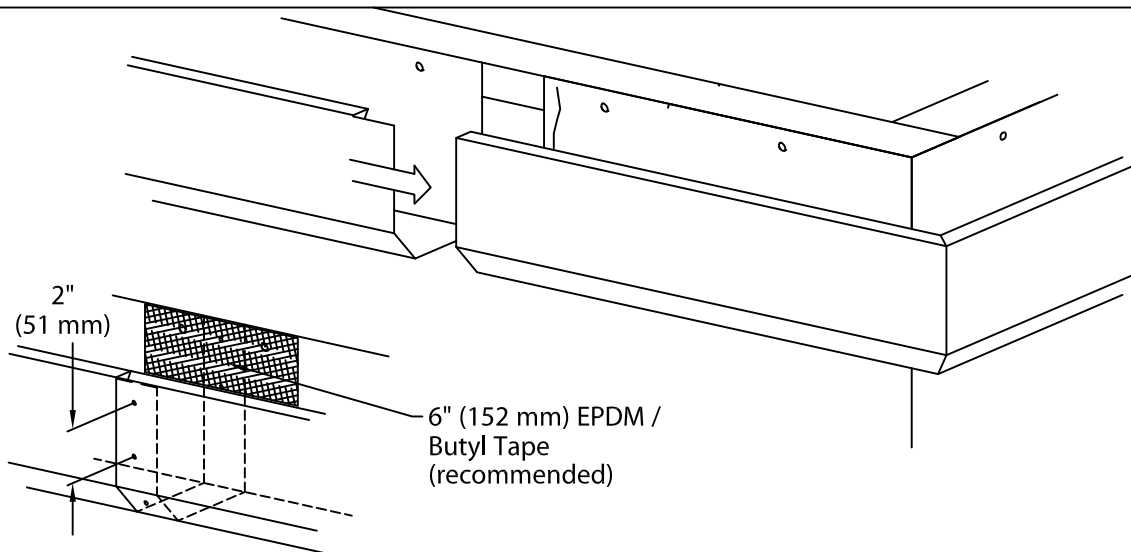
SHT.# 1 OF 4  
DWG# 22112-3985



# GENFLEX INDUSTRIAL GUTTER

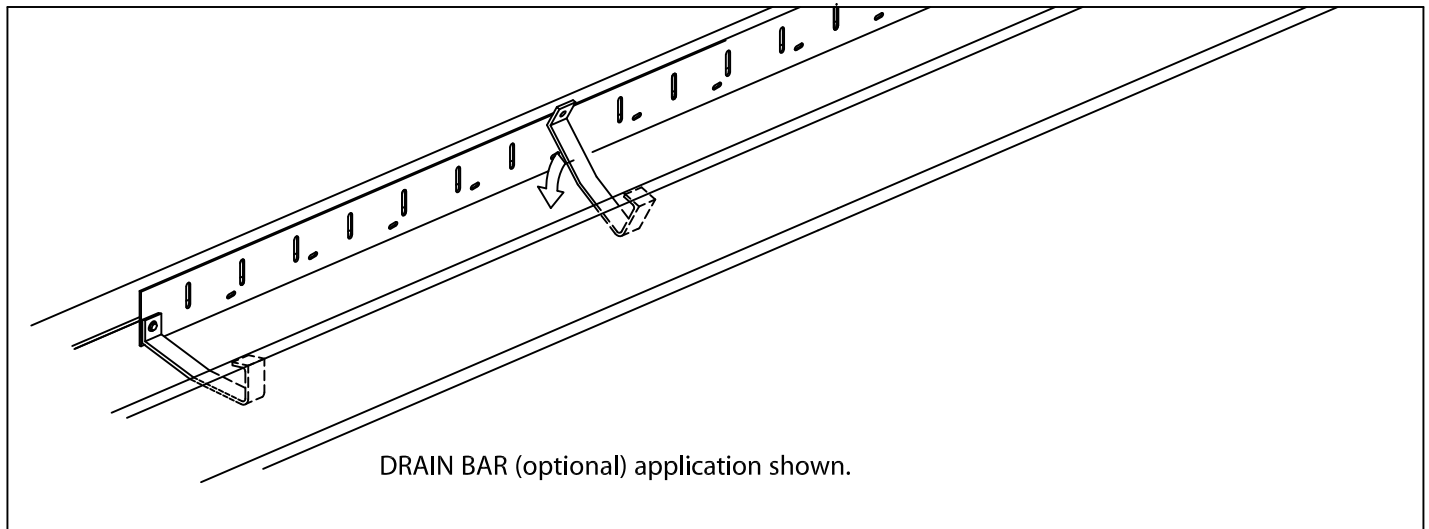
IG-1, IG-2 OR IG-B VERSION

## INSTALLATION INSTRUCTIONS



### STEP 3. GUTTER INSTALLATION

Install gutter sections from right to left as seen from roof. Insert notched end of gutter section into open end with applied sealant for a distance of 2". Rivet assembled sections at lap joint 2" o.c. using provided 1/8" stainless steel pop rivets. Field notch miter ends and/or expansion joints as required. Nail gutter sections to nailer at 12" O.C. using provided 1 1/4" galvanized roofing nails. GenFlex recommends the application of a 6" wide EPDM / Butyl pressure sensitive tape centered over the lap joint.



### STEP 4. HANGER INSTALLATION

Hook hanger under leading edge of gutter and rotate into place. Fasten hanger @ 30" O.C. using a provided #10 x 2" stainless steel fasteners through back side of gutter into wood nailer.



Phone: 800-588-2162  
Fax: 800-373-9156  
[www.metalera.com/genflex](http://www.metalera.com/genflex)

DATE: 03/09/21

DRN BY: JJC

CKD BY: MM

SHT.# 2 OF 4

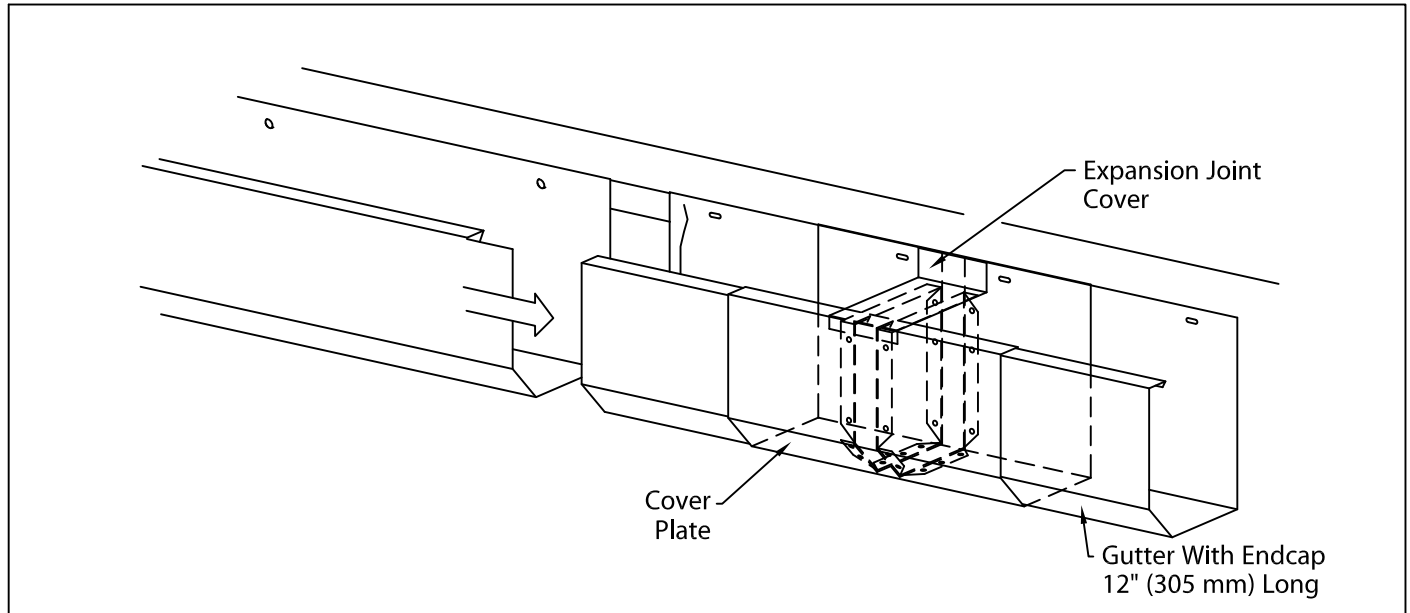
DWG# 22112-3985

|



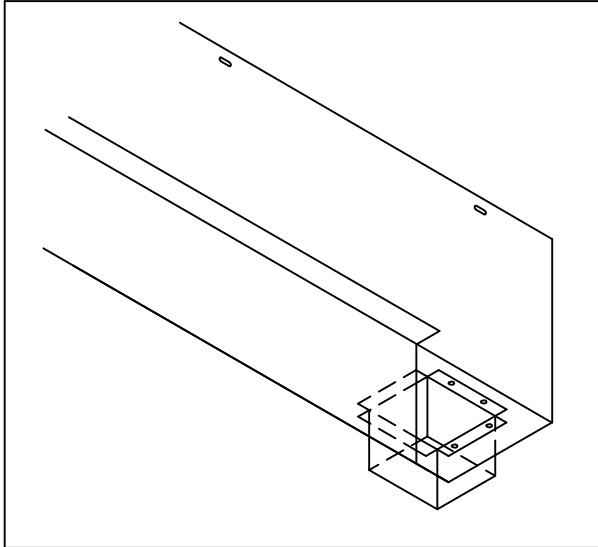
# GENFLEX INDUSTRIAL GUTTER

IG-1, IG-2 OR IG-B VERSION  
INSTALLATION INSTRUCTIONS



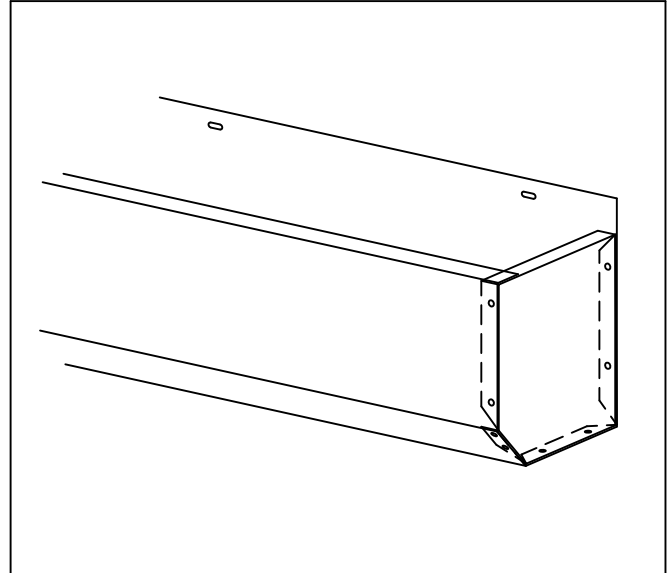
## STEP 5. EXPANSION JOINT INSTALLATION (WHERE NECESSARY)

Install expansion joints in locations as specified on roof plans or at a maximum of 48'-0" (1.22 m). Nail into place as per Step #3.



## STEP 6. OUTLET INSTALLATION

Determine outlet locations and field cut hole in a neat workmanlike manner. Insert aluminum outlet, fasten with provided 1/8" stainless steel pop rivets, 2 rivets in each flange and seal, with non-curing sealant.



## STEP 7. END CAP INSTALLATION

Install end caps at all terminations.  
Field rivet with provided 1/8" stainless steel pop rivets at 2" O.C. and seal, with non-curing sealant.



Phone: 800-588-2162  
Fax: 800-373-9156  
[www.metalera.com/genflex](http://www.metalera.com/genflex)

DATE: 03/09/21  
DRN BY: JJC  
CKD BY: MM

SHT.# 3 OF 4  
DWG# 22112-3985 |

# GENFLEX INDUSTRIAL GUTTER

## STYLE 2 GUTTER EXPANSION JOINT

### INSTALLATION INSTRUCTIONS AND OVERVIEW

