

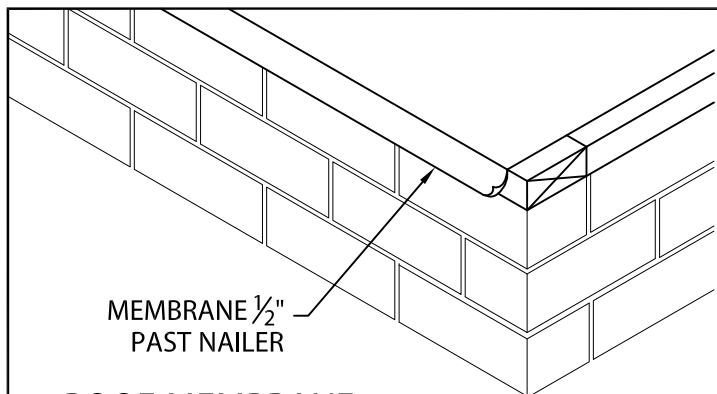


FIBERTITE KEE GRAVEL STOP

WITH CONTINUOUS CLEAT

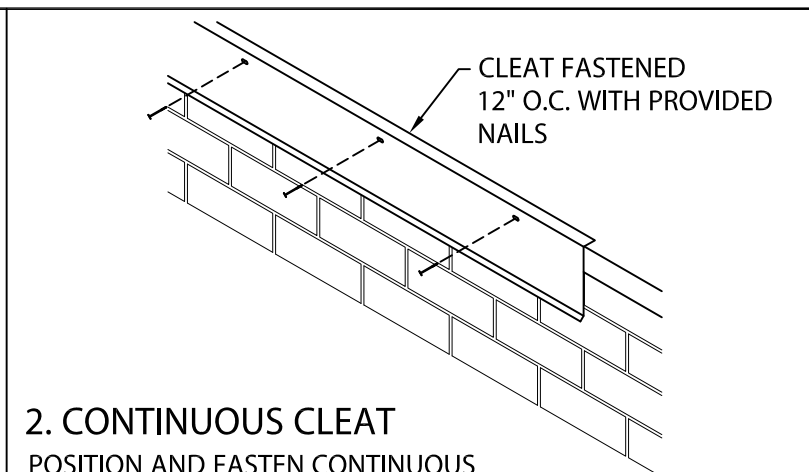
NOTE: INSTALL MITERS FIRST

INSTALLATION INSTRUCTIONS



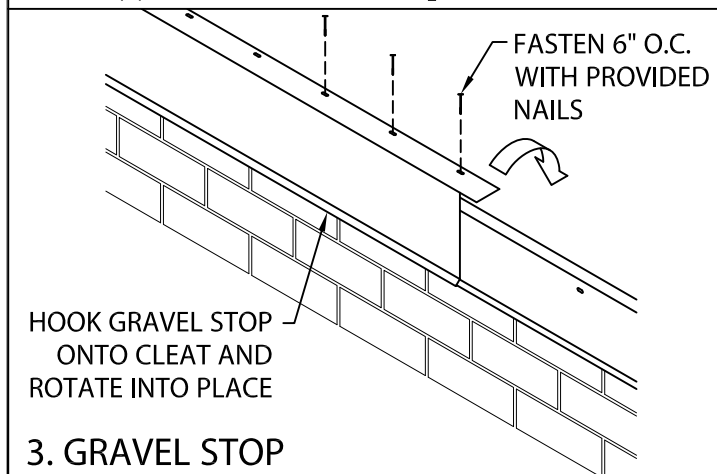
1. ROOF MEMBRANE

POSITION MEMBRANE OVER THE ROOF EDGE AND DOWN OUTSIDE FACE OF WALL, COVERING WOOD NAILER(S) COMPLETELY. ALLOW $\frac{1}{2}$ " EXCESS MEMBRANE.



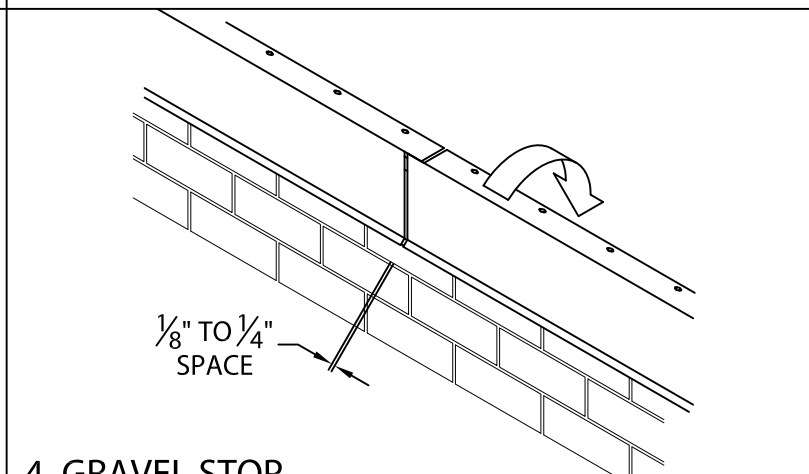
2. CONTINUOUS CLEAT

POSITION AND FASTEN CONTINUOUS CLEAT 12" O.C. THRU PRE-SLOTTED HOLES AS SHOWN WITH PROVIDED NAILS. LAP CLEAT 1" AT JOINTS.



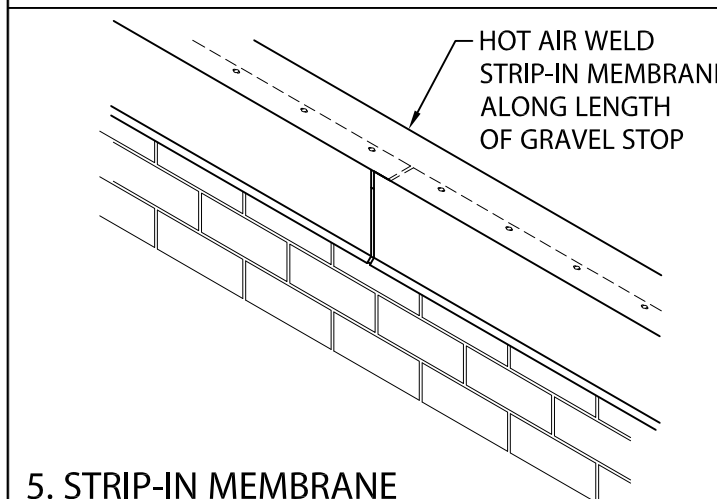
3. GRAVEL STOP

HOOK DRIP EDGE OF EACH GRAVEL STOP SECTION ONTO CONTINUOUS CLEAT, ROTATE INTO PLACE. FASTEN THRU PRE-SLOTTED HOLES 6" WITH PROVIDED NAILS.



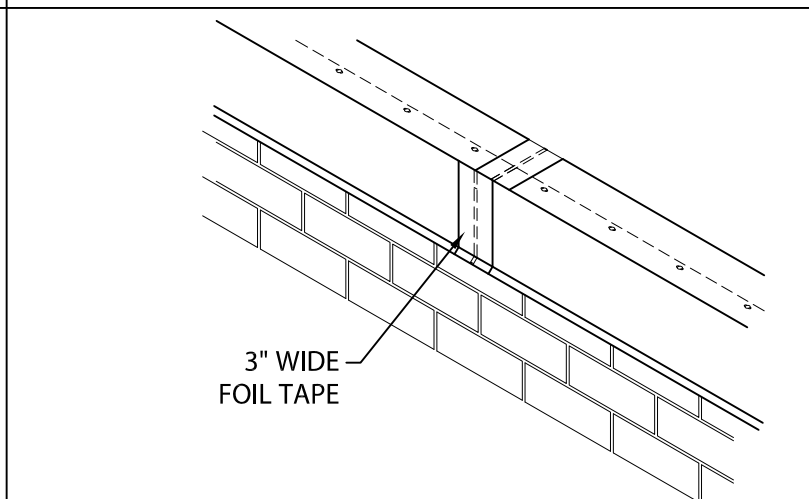
4. GRAVEL STOP

CONTINUE INSTALLING 12'-0" LENGTHS OF GRAVEL STOP. LEAVE A $\frac{1}{8}$ " TO $\frac{1}{4}$ " SPACE BETWEEN PIECES.



5. STRIP-IN MEMBRANE

HOT AIR WELD STRIP-IN MEMBRANE ALONG ENTIRE LENGTH OF GRAVEL STOP PER MANUFACTURERS INSTRUCTIONS.



6. FOIL TAPE AT JOINT

PLACE A 3" WIDE PIECE OF FOIL TAPE OVER JOINT.



Phone: 800-927-8578
ext. 1235
fax: 330-263-6950

DATE: 02/19/18
DRN BY: JJC
CKD BY: SAK

SHT.# 1 OF 2

DWG# 23110-28059

A

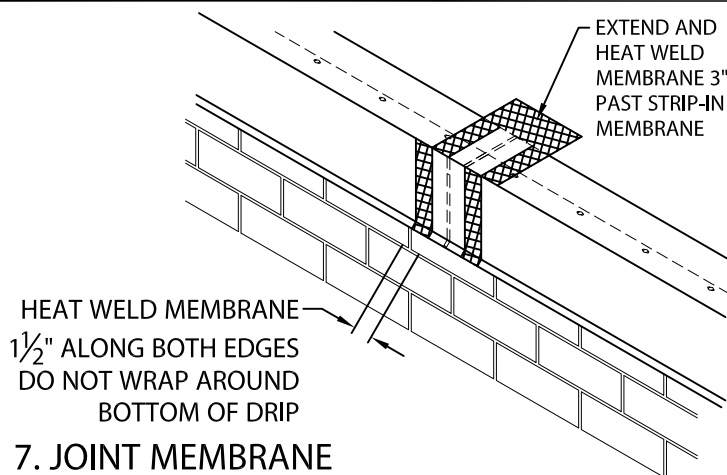


FIBERTITE KEE GRAVEL STOP

WITH CONTINUOUS CLEAT

NOTE: INSTALL MITERS FIRST

INSTALLATION INSTRUCTIONS



HEAT WELD MEMBRANE
1½" ALONG BOTH EDGES
DO NOT WRAP AROUND
BOTTOM OF DRIP

7. JOINT MEMBRANE

HEAT WELD A 6" WIDE PIECE OF NON-REINFORCED
MEMBRANE OVER JOINT AS SHOWN ABOVE.

TYPICAL INSTALLATION

