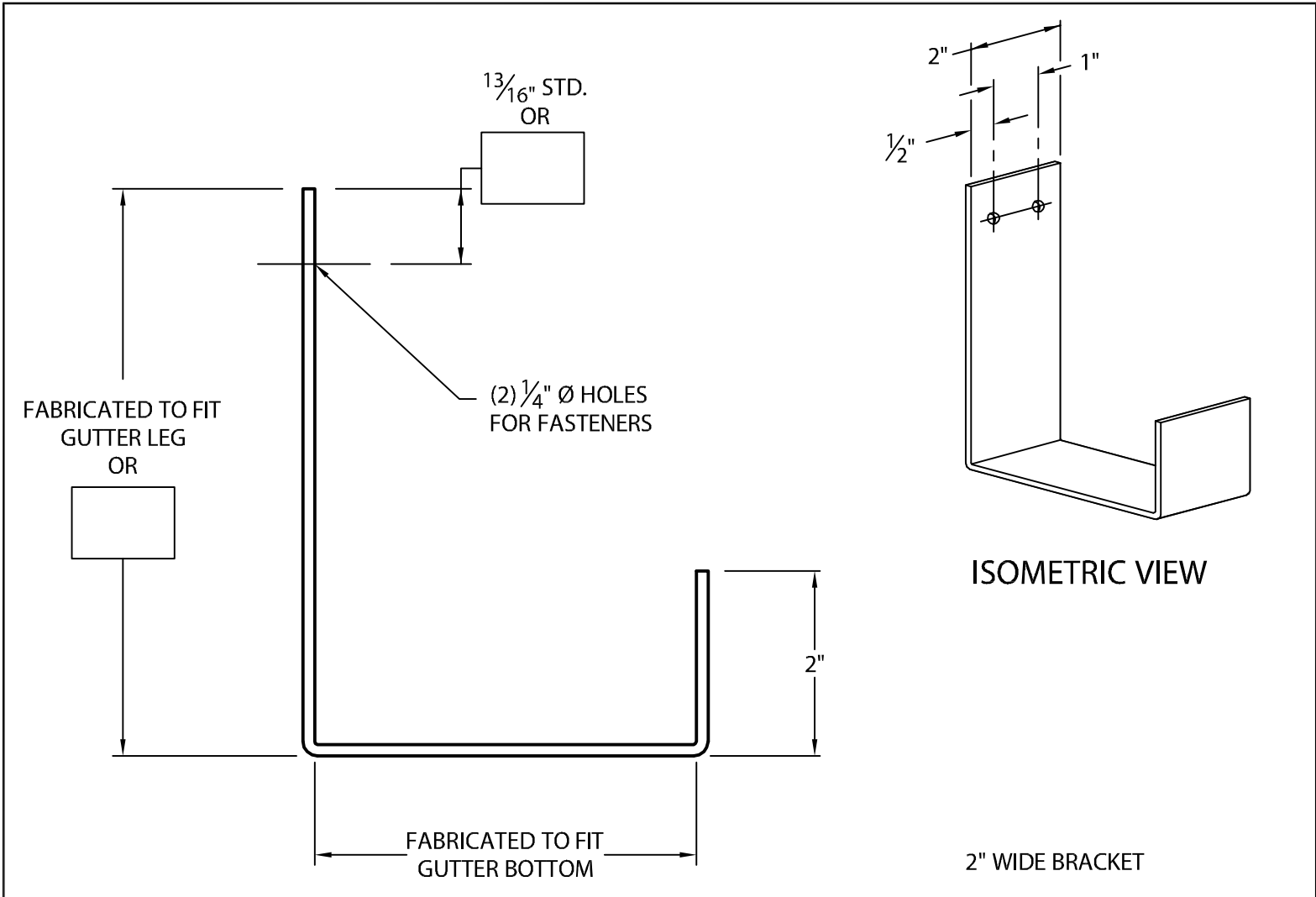


# INDUSTRIAL EXTERNAL GUTTER BRACKET

IG-B VERSION



Fabrication will proceed only after receipt of signed print approval.

## Print Approval:

Architect and/or contractor shall verify all dimensions, sizes and quantities. All products to be installed in strict accordance with Johns Manville's printed instructions.

Approved by: \_\_\_\_\_  
Date: \_\_\_\_\_

## MATERIAL:

.125" ALUMINUM  
COLOR: \_\_\_\_\_  
FINISH: \_\_\_\_\_

## QUANTITIES:

\_\_\_\_\_ AMOUNT REQUIRED\*

\*QUANTITIES OVER 200 REQUIRE AN EXTENDED LEAD TIME DUE TO POST COATING PROCESS.

PROJECT:	51 Lexington Street; Lewiston, ME 04240 CUSTOMER SERVICE: 800-223-8317 USA 800-445-1500 Canada TECHNICAL SERVICE: 800-445-1500 USA & Canada FAX: 207-784-0125 OTHER AREAS CALL: 207-784-0123
ARCHITECT:	
ROOFING CONTRACTOR:	
REPRESENTATIVE/DISTRIBUTOR:	



DATE: 03/04/16	SHT.# ___ OF ___
DRN BY: JJC	DWG# 16012-3994
CKD BY: SAK	