



ROOFING SYSTEMS

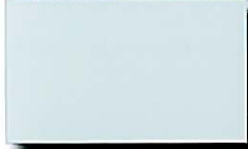
800-558-2162

www.metalera.com/dow

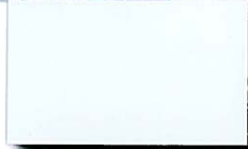
Color Chart

Our colors are deep, rich and true. Made of Valspar's Fluoropon® High Performance Hylar 5000®/Kynar 500® finish, they offer the ultimate in resistance against fading and weathering. In addition to our many standard colors, custom colors are also available.

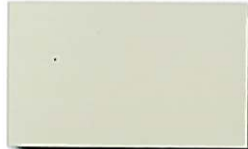
Express Colors



Stone White



Bone White



Almond



Sandstone



Cityscape



Slate Gray



Sierra Tan



Medium (Roman) Bronze



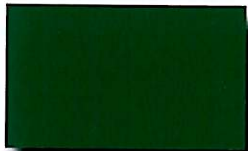
Dark Bronze



Mansard Brown



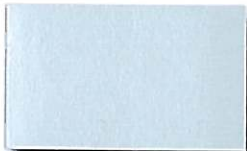
Colonial Red



Forest (Sherwood) Green



Silver Metallic ★



Clear Anodized



Mill Finish

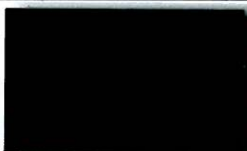
Standard Colors



Granite



Charcoal Gray (Charcoal)



Extra Dark Bronze



Matte Black



Brandywine (Burgundy)



Terra Cotta



Regal (Cardinal) Red



Sky (Military) Blue



Regal (Interstate) Blue



Teal



Patina Green



Dark Ivy



Hartford Green



Hemlock Green



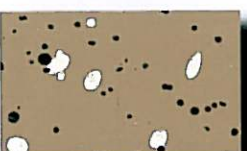
Tropical Patina



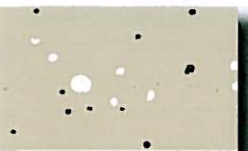
Classic (Penny) Copper ★



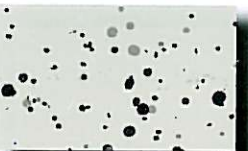
Champagne Metallic ★



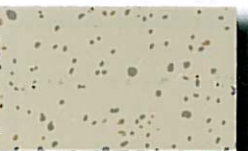
Brown Stone ■



Lime Stone ■



Cast Stone ■



Sand Stone ■

Protective film must be removed immediately. For a true color representation, please call or write for actual metal sample(s).

★ = Premium Color

■ = Premium Color, Post-painted

Quick Reference Guide

	24 ga.	22 ga.	.040"	.050"	.063"	.080"	.100"	.125"
Hylar 500® / Kynar 500®	Almond	◆	◆	◆	◆			
	Bone White	◆	◆	◆	◆	◆		
	Brandywine (Burgundy)	◆	◆	◆	◆			
	Charcoal Gray (Charcoal)	◆	◆	◆	◆			
	Cityscape	◆	◆	◆	◆			
	Colonial Red	◆	◆	◆	◆			
	Dark Bronze	◆	◆	◆	◆	◆		
	Dark Ivy	◆	◆	◆				
	Extra Dark Bronze	◆	◆	◆				
	Forest (Sherwood) Green	◆	◆	◆	◆			
	Granite	◆	◆	◆	◆			
	Hartford Green	◆	◆	◆	◆			
	Hemlock Green	◆	◆	◆	◆			
	Mansard Brown	◆	◆	◆	◆			
	Matte Black	◆	◆	◆	◆	◆		
	Medium (Roman) Bronze	◆	◆	◆	◆	◆		
	Patina Green	◆	◆	◆	◆			
	Regal (Interstate) Blue	◆	◆	◆	◆			
	Regal (Cardinal) Red	◆	◆	◆	◆			
	Sky (Military) Blue	◆	◆	◆	◆			
	Slate Gray	◆	◆	◆	◆			
	Sandstone	◆	◆	◆	◆	◆		
	Sierra Tan	◆	◆	◆	◆			
	Stone White	◆	◆	◆	◆	◆		
	Teal	◆	◆	◆				
	Terra Cotta	◆	◆	◆	◆			
	Tropical Patina	◆	◆					
Premium	★ Champagne Metallic	◆		◆	◆			
	★ Classic (Penny) Copper	◆	◆	◆	◆			
	★ Silver Metallic	◆	◆	◆	◆			
	■ Brown Stone			◆	◆	◆	◆	◆
	■ Lime Stone			◆	◆	◆	◆	◆
	■ Cast Stone			◆	◆	◆	◆	◆
■ Sand Stone			◆	◆	◆	◆	◆	
Coil Anodized	Black			◆				
	Clear			◆	◆	◆		
	Dark Bronze			◆	◆	◆		
	Extra Dark Bronze			◆				
	Champagne			◆				
Other	Mill Finish (3003-H14)			◆	◆	◆	◆	◆
	110 Copper	16 oz & 20 oz.						
	304 Stainless Steel	20 ga., 22 ga. & 24 ga.						
	Galvanized Steel	20 ga., 22 ga. & 24 ga.						

Also available (additional charges may apply):

- RHEINZINK® materials
- Stucco Embossed Sheets

valspar

Please Note

Metal-Era receives metal through multiple vendors. If a specific metal vendor is required for a project, please specify this at the time of order.

These color reproductions are as accurate as modern printing technology will permit and may vary slightly from actual colors supplied. Finished color chip samples are available upon request. Customer is responsible for color selections chosen from printed literature.

Kynar 500® based fluopolymer coating is a high-grade architectural finish offering excellent resistance to degradation caused by nature's elements and airborne contaminants. A limited twenty (20) year warranty is available on the prefinished coil-coated steel and aluminum colors shown.

A limited ten (10) year warranty is included for post-painted Kynar-coated aluminum applications unless otherwise stated. A twenty (20) year warranty is also available only upon request at the time of order. Restrictions may apply; consult a sales representative for specific information.

Standard anodized finishes that utilize a continuous coil anodizing process to provide excellent color consistency from piece to piece are available. However, shade variations may occur from coil batch to coil batch.

Batch anodizing is also available. Due to shade variations that occur in the anodizing process, it is recommended that the contractor work with the architect or building owner to sort and install products in the arrangement best suited to the owner's preference. We are not responsible for shade variations inherent to the anodizing process.

Kynar 500 is a registered trademark of Arkema, Inc. Valspar is a registered trademark of Valspar Sourcing, Inc.

©2009. All statements herein are expressions of opinion, which by performance and testing are believed to be accurate and reliable, but are presented without guarantee or responsibility on our part. Statements concerning possible use of our products are made without any knowledge that such recommended uses may infringe any patent. No warranty, express or implied, other than that described in this literature, is made or intended.