



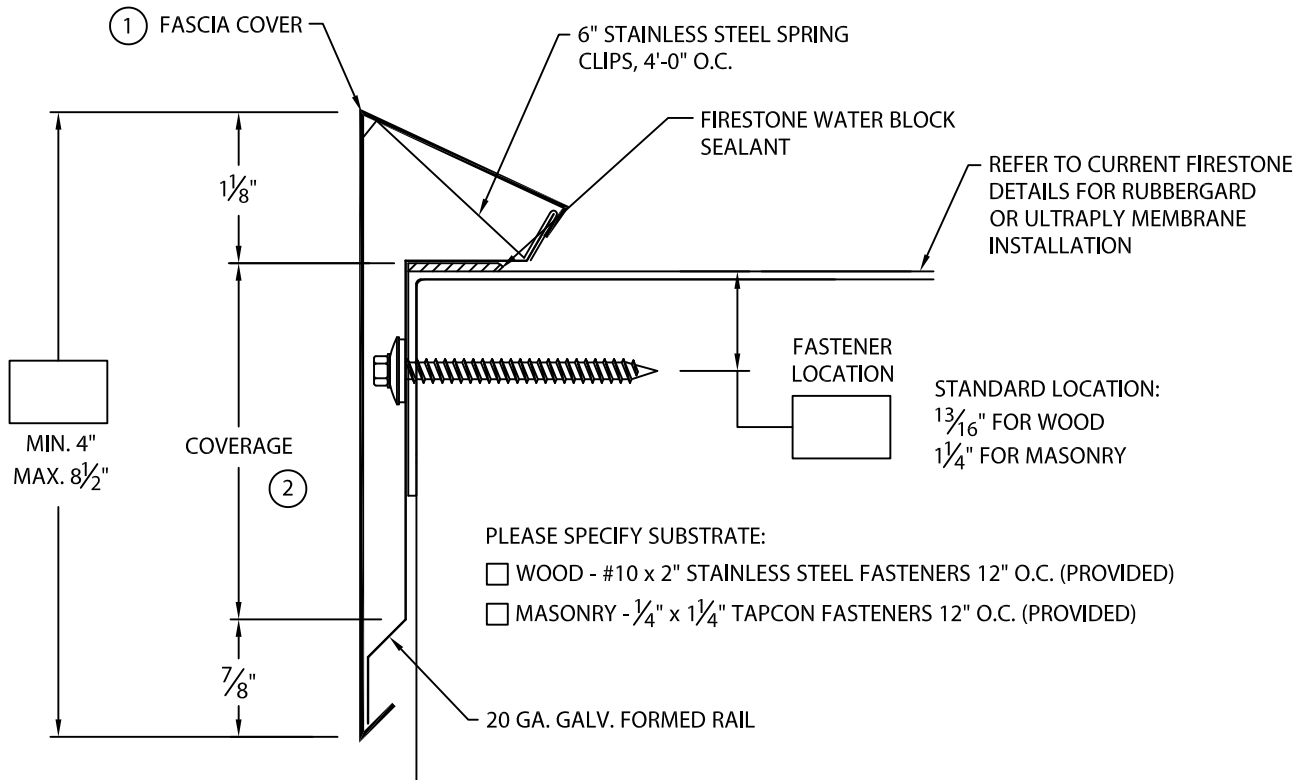
CUSTOM FIRESTONE RAIL FASCIA

FULLY ADHERED OR MECHANICALLY ATTACHED RUBBERGARD OR ULTRAPLY VERSION

CUSTOM FACE SIZE, FASTENER LOCATION AND COVER LENGTHS - .050" AND .063" COVER MATERIAL

ANSI/SPRI ES-1 DESIGN PRESSURE OF 155 psf

U.S. Patent # 5,927,023



NOTES:

- ① FASCIA COVER PROVIDED WITH 3 1/2" SPLICE PLATES.
- ② TYPICALLY COVERAGE SHOULD EXTEND A MIN. OF 1" BELOW WOOD BLOCKING IF APPLICABLE.

MATERIAL:

___ .050" Aluminum
 ___ .063" Aluminum
 ___ Other _____

Color: _____

Finish: _____

QUANTITIES:

___ Lineal Feet @ _____ Lengths

OR

___ Pcs. @ _____ Lengths

___ Outside Miters @ 90° (Cover Only)

___ Inside Miters @ 90° (Cover Only)

For Non-90° Miters, See Print Approval #13010-1043

Fabrication will proceed only after receipt of signed print approval.

Print Approval:

Architect and/or contractor shall verify all dimensions, sizes and quantities. All products to be installed in strict accordance with Firestone's printed instructions.

Approved by: _____

Date: _____

PROJECT:

ARCHITECT:

ROOFING CONTRACTOR:

REPRESENTATIVE/DISTRIBUTOR:



EDGE GARD SYSTEMS
PHONE: 800-872-0203
FAX: 800-770-3934

DATE: 02/02/18

DRN BY: JJC

CKD BY: SAK

SHT.# ___ OF ___

DWG# 13310-19959

F