



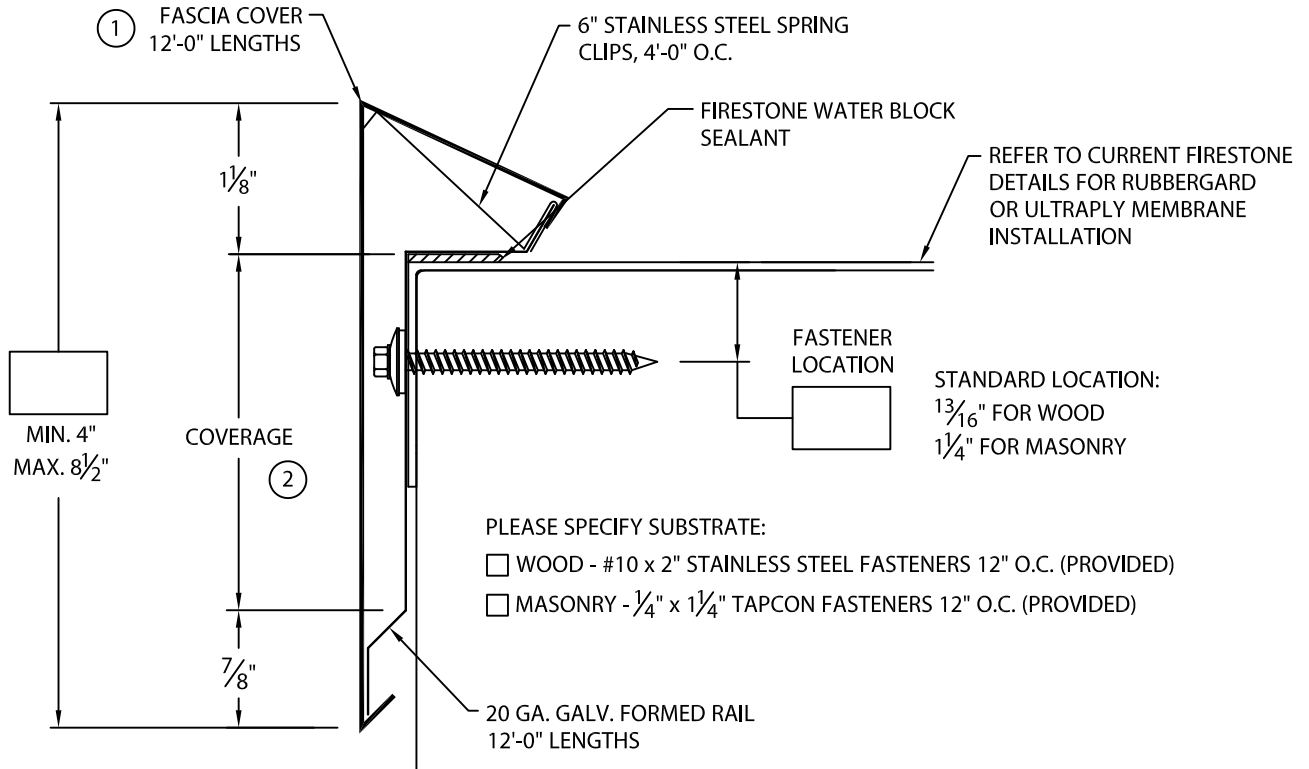
CUSTOM FIRESTONE RAIL FASCIA

FULLY ADHERED OR MECHANICALLY ATTACHED RUBBERGARD OR ULTRAPLY VERSION

CUSTOM FACE SIZE AND FASTENER LOCATION - 24 GA., 22 GA. AND .040" COVER MATERIAL

ANSI/SPRI ES-1 DESIGN PRESSURE OF 155 psf

U.S. Patent # 5,927,023



NOTES:

- ① FASCIA COVER PROVIDED WITH 1" LAP JOINT
- ② TYPICALLY COVERAGE SHOULD EXTEND A MIN. OF 1" BELOW WOOD BLOCKING IF APPLICABLE.

MATERIAL:

- ___ 24 Ga. Galvanized Steel
- ___ 22 Ga. Galvanized Steel
- ___ .040" Aluminum
- ___ Other _____

Color: _____

Finish: _____

QUANTITIES:

- _____ Lineal Feet 12'-0" Lengths
- _____ Outside Miters (Cover Only) @ 90°
- _____ Inside Miters (Cover Only) @ 90°

For Non-90° Miters, See Print Approval #13010-1043

Fabrication will proceed only after receipt of signed print approval.

Print Approval:

Architect and/or contractor shall verify all dimensions, sizes and quantities. All products to be installed in strict accordance with Firestone's printed instructions.

Approved by: _____

Date: _____

PROJECT:

ARCHITECT:

ROOFING CONTRACTOR:

REPRESENTATIVE/DISTRIBUTOR:



EDGE GARD SYSTEMS
PHONE: 800-872-0203
FAX: 800-770-3934

DATE: 11/13/18

DRN BY: JJC

CKD BY: SAK

SHT.# ___ OF ___

DWG# 13310-19799

H