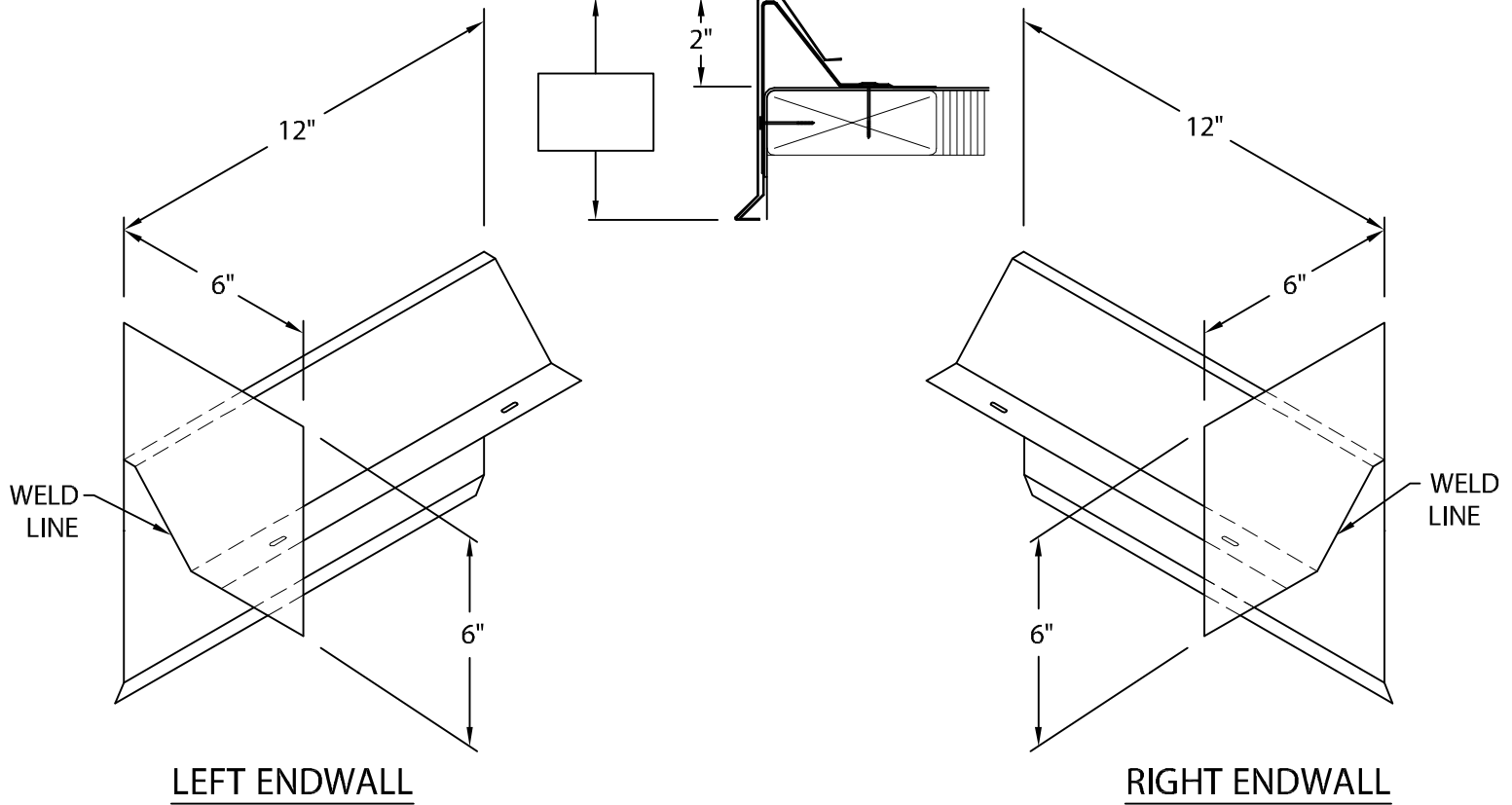


PERMA-TITE SYSTEM 200 FASCIA ENDWALL FLASHING

SINGLE-PLY APPLICATION, CRIMP-ON VERSION



DIRECTION IS DETERMINED AS SEEN FROM ROOF SIDE

Fabrication will proceed only after receipt of signed print approval.

Print Approval:

Architect and/or contractor shall verify all dimensions, sizes and quantities. All products to be installed in strict accordance with Metal-Era's printed instructions.

Approved by: _____

Date: _____

MATERIAL:

.050" (1.27 mm) Mill Finish Aluminum

QUANTITIES:

_____ Right Hand Endwall

_____ Left Hand Endwall

PROJECT:

ARCHITECT:

ROOFING CONTRACTOR:

REPRESENTATIVE/DISTRIBUTOR:

Corporate Offices, Manufacturing
 1600 Airport Road; Waukesha, WI 53188
 Phone: 800-558-2162
 Fax: 800-373-9156
 www.metalera.com



DATE: 04/23/15

DRN BY: JJC

CKD BY: SAK

SHT.# ____ OF ____

DWG# 11010-16924

B