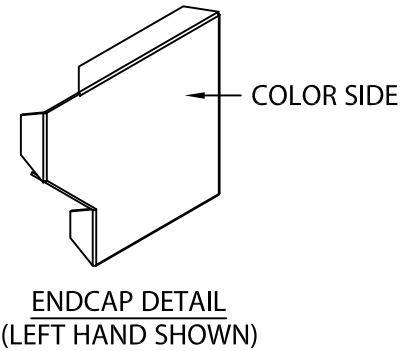
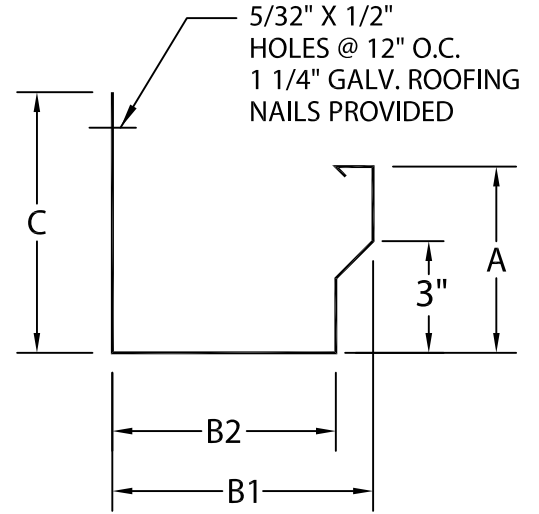
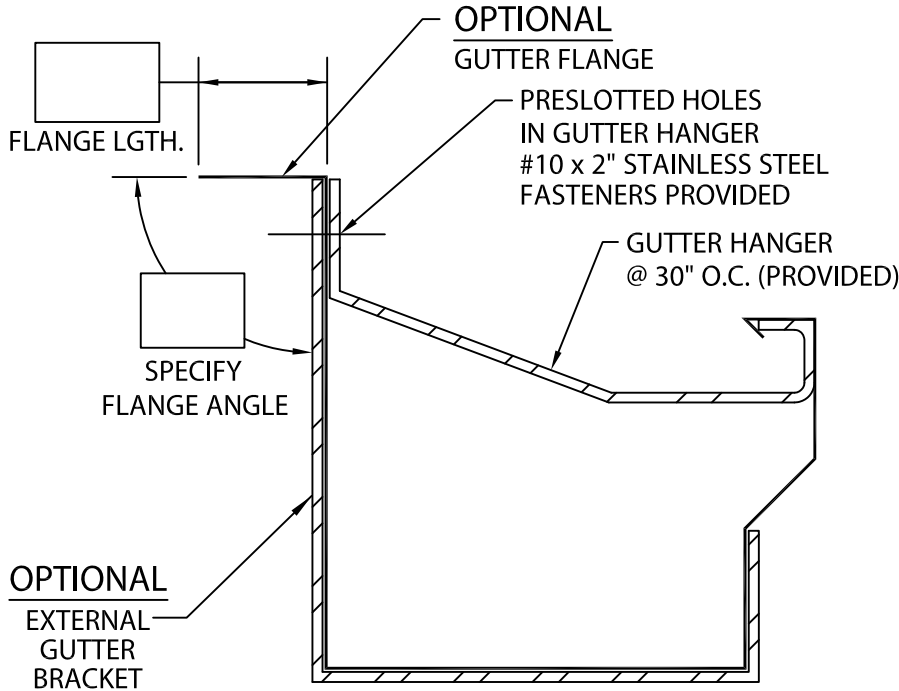




# SEAL-TITE INDUSTRIAL GUTTER

IG-1 VERSION



PRODUCT ID #	C	B1	B2	A	HANGER
<input type="checkbox"/> IG1-C6	6"	4 3/4"	3 3/4"	4 1/2"	1 1/4" X .100 Mill
<input type="checkbox"/> IG1-C7	7"	6"	5"	6"	1 1/4" X .100 Mill
<input type="checkbox"/> IG1-C8	8"	7"	6"	7"	2" X .100 Mill
<input type="checkbox"/> IG1-C9	9"	8"	7"	8"	2" X .100 Mill

**NOTES:**

- MAXIMUM DOWNSPOUT DIMENSION NOT TO EXCEED "B2" MINUS 9/16".
- 2" LAP JOINTS PROVIDED.
- 1/8" STAINLESS STEEL POP RIVETS PROVIDED.
- UNLESS OTHERWISE NOTED, FABRICATION OF MITERS ARE FURNISHED STANDARD UTILIZING A NON-PENETRATING QUICKLOCK JOINT, THEN FACTORY SEALED WATERTIGHT.
- WELDED ACCESSORIES REQUIRE A MINIMUM MATERIAL THICKNESS OF .050".

**MATERIAL:**

- \_\_\_ 24 GA. GALVANIZED STEEL
- \_\_\_ .040" ALUMIINIUM COLOR: \_\_\_\_\_
- \_\_\_ .050" ALUMINUM FINISH: \_\_\_\_\_
- \_\_\_ .063" ALUMINUM
- \_\_\_ OTHER \_\_\_\_\_

**QUANTITIES:**

- \_\_\_ LINEAL FEET 12'-0" LENGTHS
  - \_\_\_ OUTSIDE MITERS @ 90°
  - \_\_\_ INSIDE MITERS @ 90°
  - \_\_\_ ENDCAPS: RIGHT \_\_\_ LEFT \_\_\_
  - \_\_\_ EXPANSION JOINTS
  - \_\_\_ STYLE "1" \_\_\_ STYLE "2" \_\_\_
- SPECIFY MITER TYPE:  
 WELDED  
 QUICKLOCK

FOR EXTERNAL GUTTER BRACKETS SEE PRINT APPROVAL #11012-1506  
 FOR NON-90 MITERS SEE PRINT APPROVAL #11012-10010

Fabrication will proceed only after receipt of signed print approval.

**Print Approval:**

Architect and/or contractor shall verify all dimensions, sizes and quantities. All products to be installed in strict accordance with Metal-Era's printed instructions.

Approved by: \_\_\_\_\_

Date: \_\_\_\_\_

PROJECT:

ARCHITECT:

ROOFING CONTRACTOR:

REPRESENTATIVE/DISTRIBUTOR:

Corporate Offices, Manufacturing  
 1600 Airport Road; Waukesha, WI 53188  
 Phone: 800-558-2162  
 Fax: 800-373-9156  
 www.metalera.com



DATE: 03/10/17

DRN BY: JAB

CKD BY: SAK

SHT.# \_\_\_ OF \_\_\_

DWG# 11012-1300