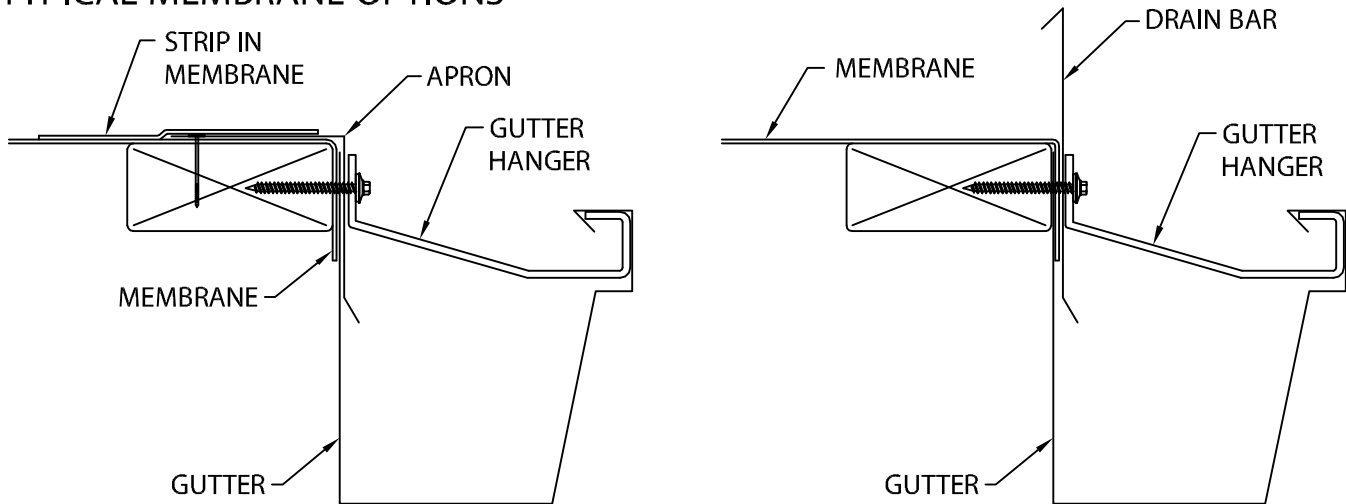


SEAL-TITE INDUSTRIAL GUTTER

IG-3 VERSION

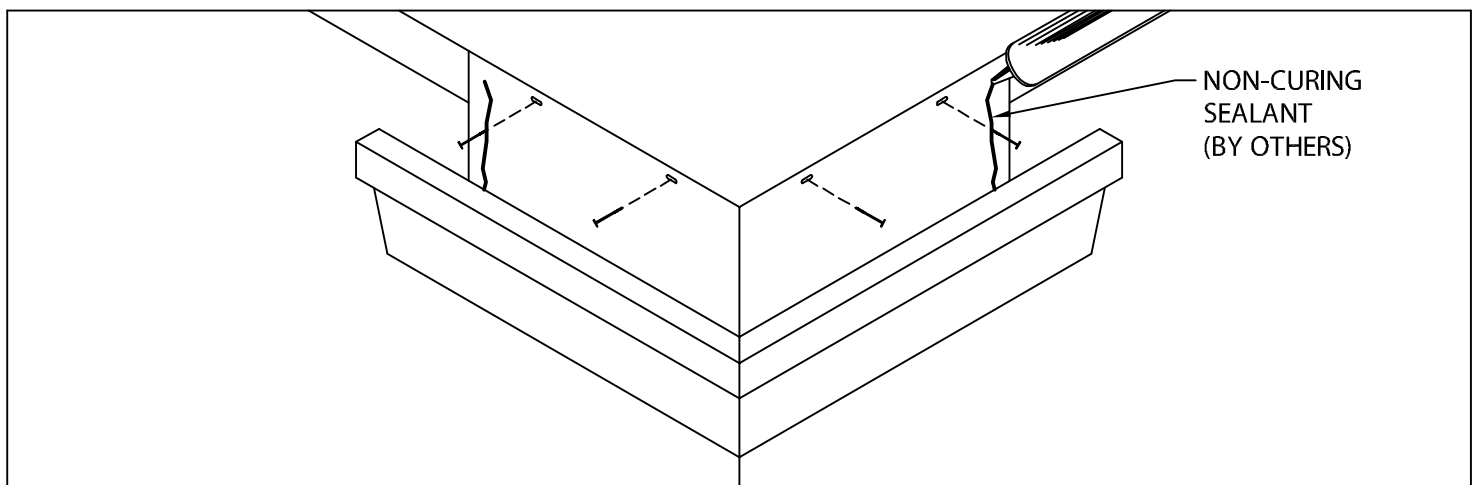
INSTALLATION INSTRUCTIONS

TYPICAL MEMBRANE OPTIONS



STEP 1. MEMBRANE INSTALLATION

REVIEW CAREFULLY AND FOLLOW PRIMARY ROOF MATERIAL MANUFACTURER'S RECOMMENDATIONS, AND ARCHITECT'S DETAILS FOR INSTALLING ROOF MEMBRANE IN CONJUNCTION WITH THIS GUTTER SYSTEM.



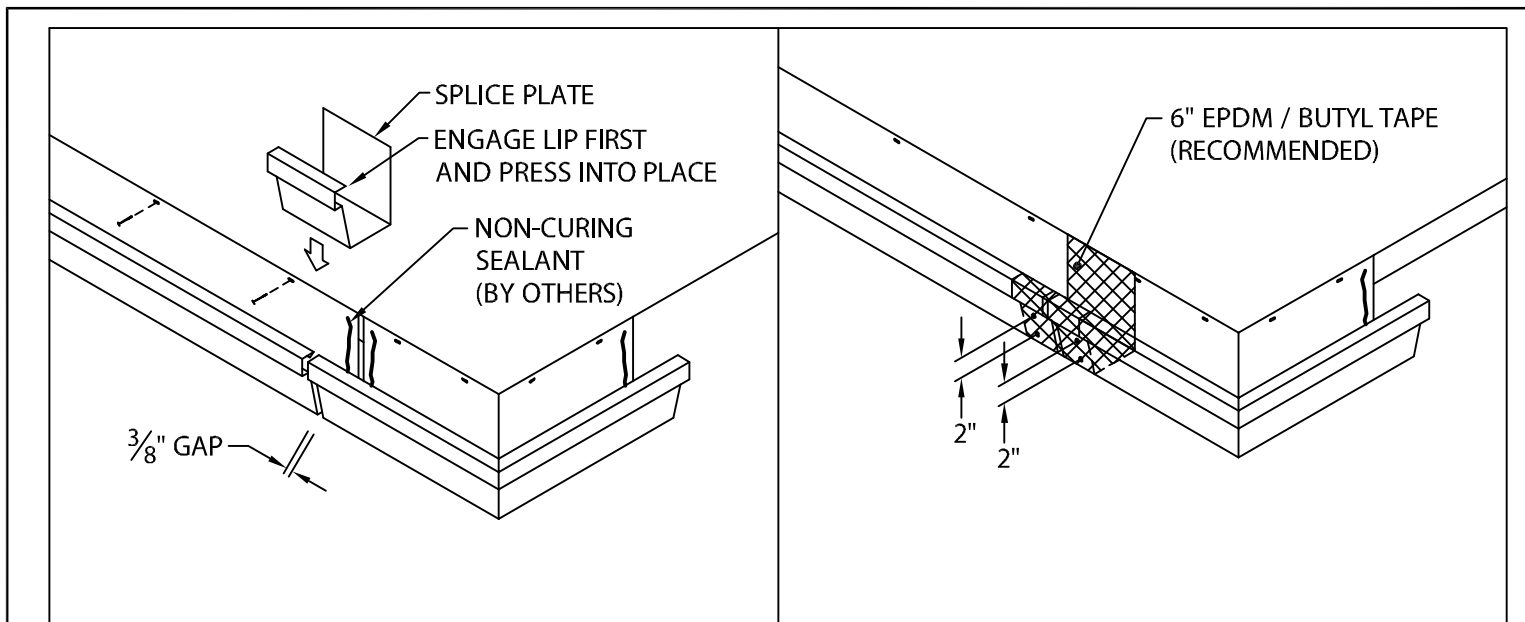
STEP 2. MITER INSTALLATION

INSTALL MITERS AT LOCATIONS SHOWN ON PLANS. FASTEN TO NAILER THROUGH PRE-SLOTTED HOLES 12" O.C. USING PROVIDED 1/4" GALVANIZED ROOFING NAILS. APPLY A HEAVY BEAD OF NON-CURING SEALANT TO THE INSIDE OF EACH MITER END AS SHOWN.

SEAL-TITE INDUSTRIAL GUTTER

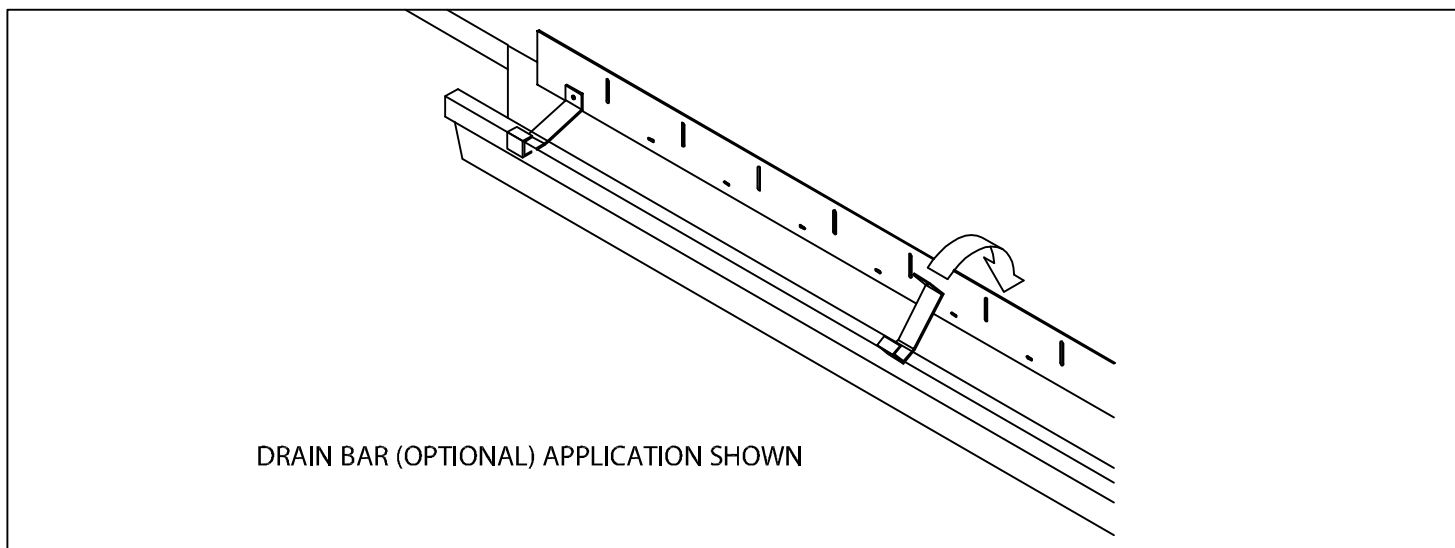
IG-3 VERSION

INSTALLATION INSTRUCTIONS



STEP 3. GUTTER INSTALLATION

INSTALL GUTTER SECTIONS FROM RIGHT TO LEFT AS SEEN FROM ROOF. APPLY A HEAVY BEAD OF NON-CURING SEALANT TO INSIDE LENGTH OF GUTTER. LEAVE A $\frac{3}{8}$ " GAP AT SPLICE JOINT. PLACE A 6" WIDE SPLICE PLATE AT JOINT. RIVET SECTIONS WITH PROVIDED $\frac{1}{8}$ " STAINLESS STEEL POP RIVETS AT SPLICE JOINT 2" O.C. AS SHOWN. NAIL GUTTER SECTIONS TO NAILER AT 12" O.C. USING PROVIDED $\frac{1}{4}$ " GALVANIZED ROOFING NAILS. METAL-ERA RECOMMENDS THE APPLICATION OF EPDM / BUTYL PRESSURE SENSITIVE TAPE CENTERED OVER THE SPLICE PLATE AND LAPPING THE GUTTER SECTIONS A MINIMUM OF 1"



STEP 4. HANGER INSTALLATION

HOOK HANGER UNDER LEADING EDGE OF GUTTER AND ROTATE INTO PLACE. FASTEN HANGER 30" O.C. USING PROVIDED #10 x 2" STAINLESS STEEL FASTENERS THROUGH BACK SIDE OF GUTTER INTO WOOD NAILER.



Phone: 800-558-2162
Fax: 800-373-9156
www.metalera.com

DATE: 08/24/17
DRN BY: JJC
CKD BY: SAK

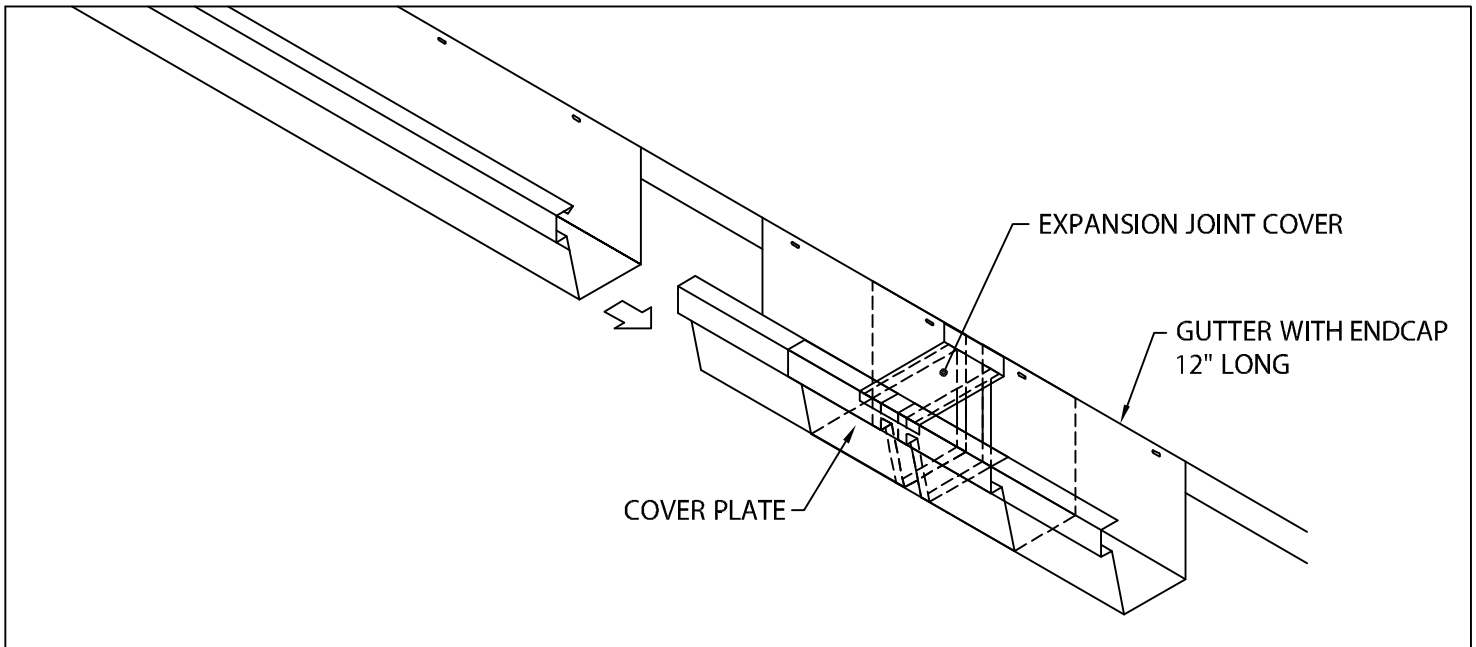
SHT.# 2 OF 5
DWG# 11112-26773

B

SEAL-TITE INDUSTRIAL GUTTER

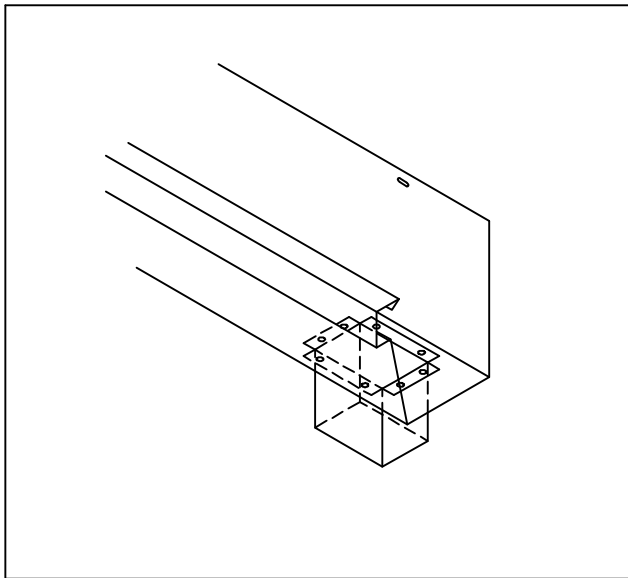
IG-3 VERSION

INSTALLATION INSTRUCTIONS



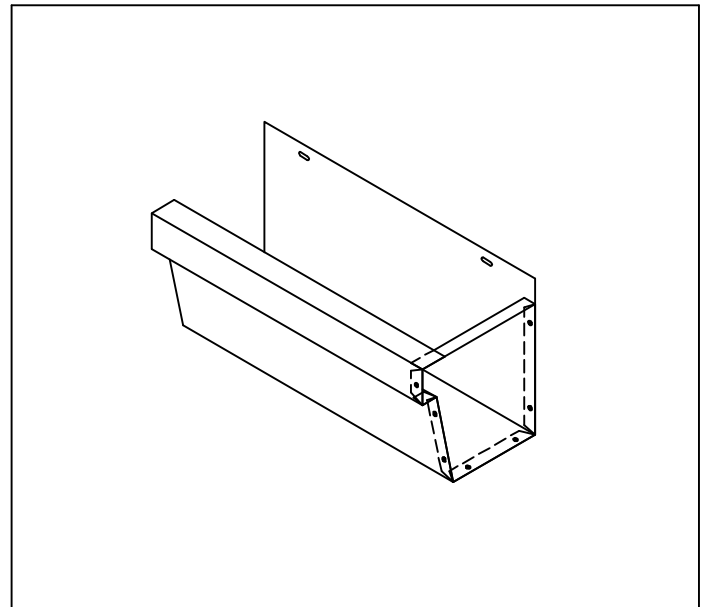
STEP 5. EXPANSION JOINT INSTALLATION (WHERE NECESSARY)

INSTALL EXPANSION JOINTS IN LOCATIONS AS SPECIFIED ON ROOF PLANS OR AT A MAXIMUM OF 48'-0" O.C. NAIL INTO PLACE AND INSTALL SPLICE PLATE AS PER STEP #3.



STEP 6. OUTLET INSTALLATION

DETERMINE OUTLET LOCATIONS AND FIELD CUT HOLE IN A NEAT WORKMANLIKE MANNER. INSERT ALUMINUM OUTLET, FASTEN WITH PROVIDED $\frac{1}{8}$ " STAINLESS STEEL POP RIVETS, TWO RIVETS IN EACH FLANGE AND SEAL WITH NON-CURING SEALANT.



STEP 7. END CAP INSTALLATION

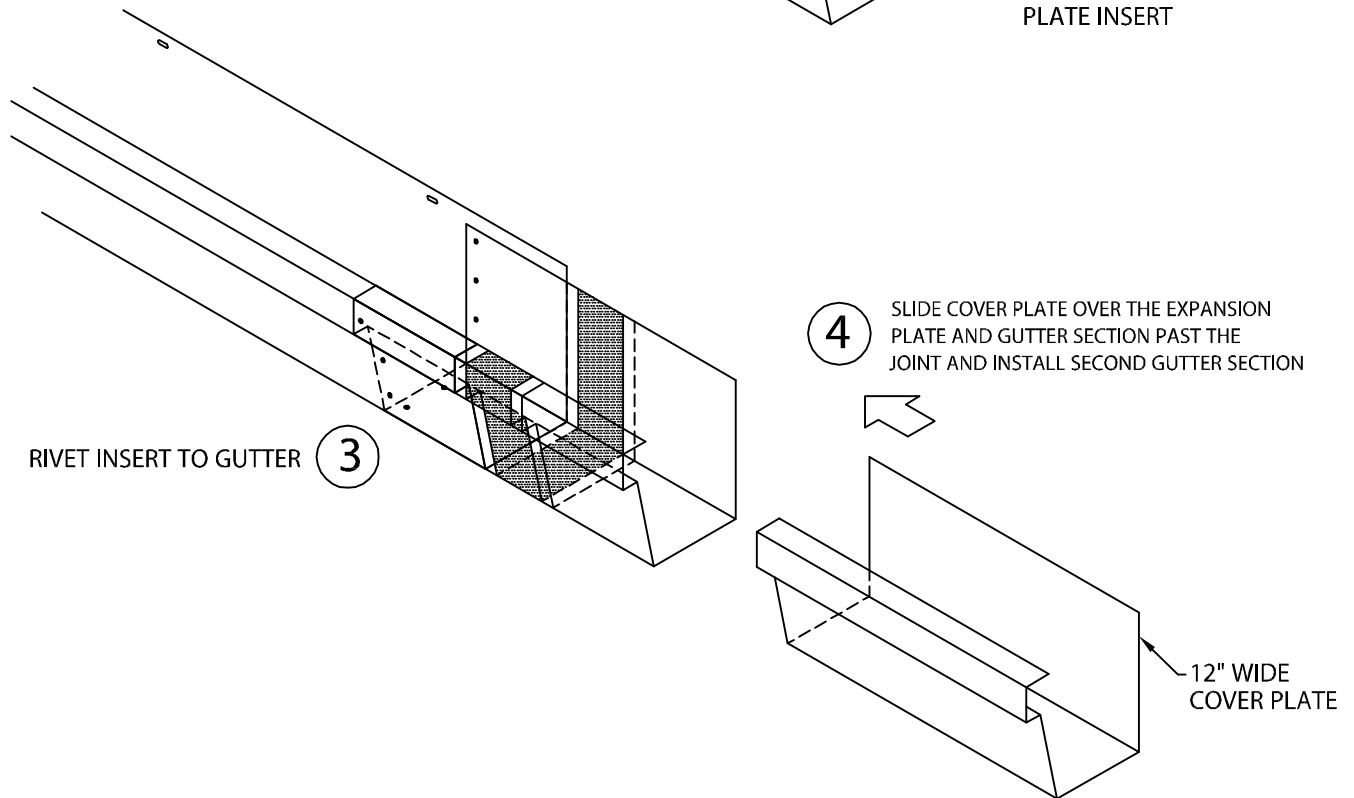
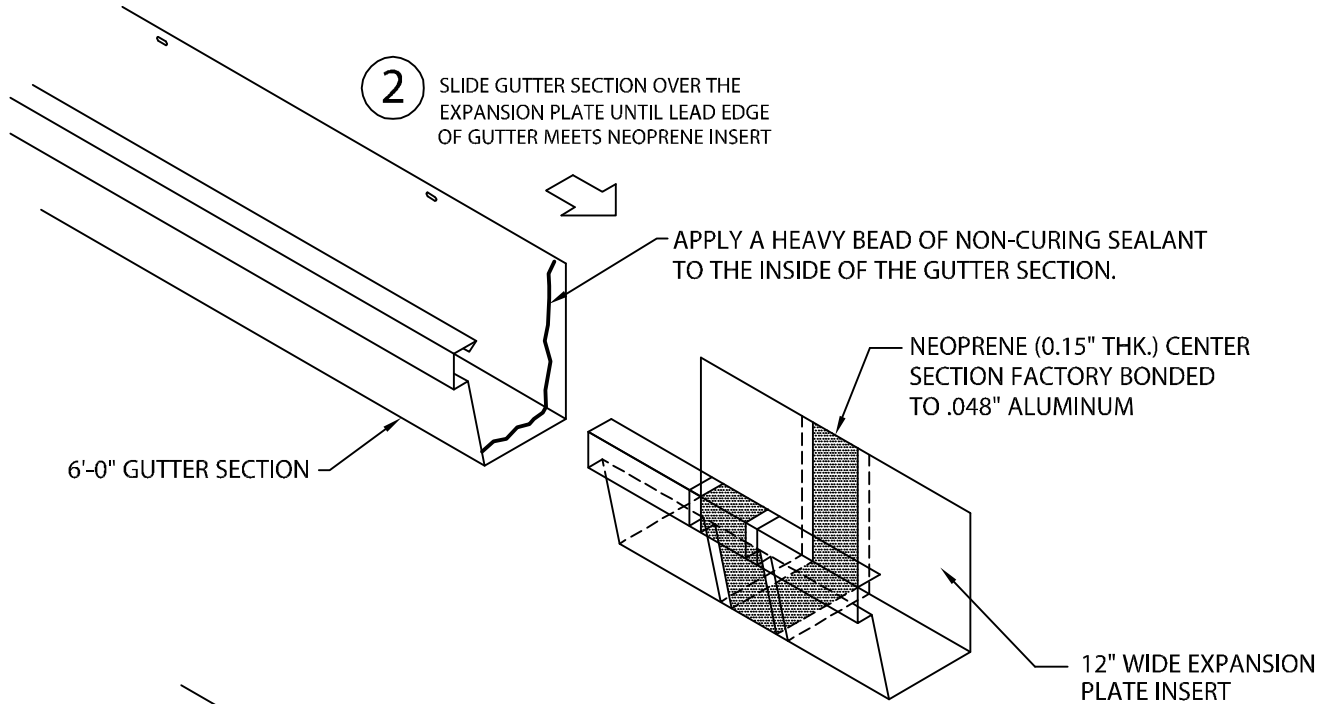
INSTALL ENDCAPS AT ALL TERMINATIONS. FIELD RIVET WITH PROVIDED $\frac{1}{8}$ " STAINLESS STEEL POP RIVETS AT 2" O.C. AND SEAL WITH NON-CURING SEALANT

SEAL-TITE INDUSTRIAL GUTTER

IG-3 VERSION

INSTALLATION INSTRUCTIONS

- ① CUT A 12'-0" SECTION OF THE GUTTER INTO (2) 6'-0" PIECES. (THE EXPANSION JOINT IS DESIGNED TO FIT BETWEEN THE (2) 6'-0" SECTIONS).



SEAL-TITE INDUSTRIAL GUTTER

IG-3 VERSION

INSTALLATION INSTRUCTIONS

