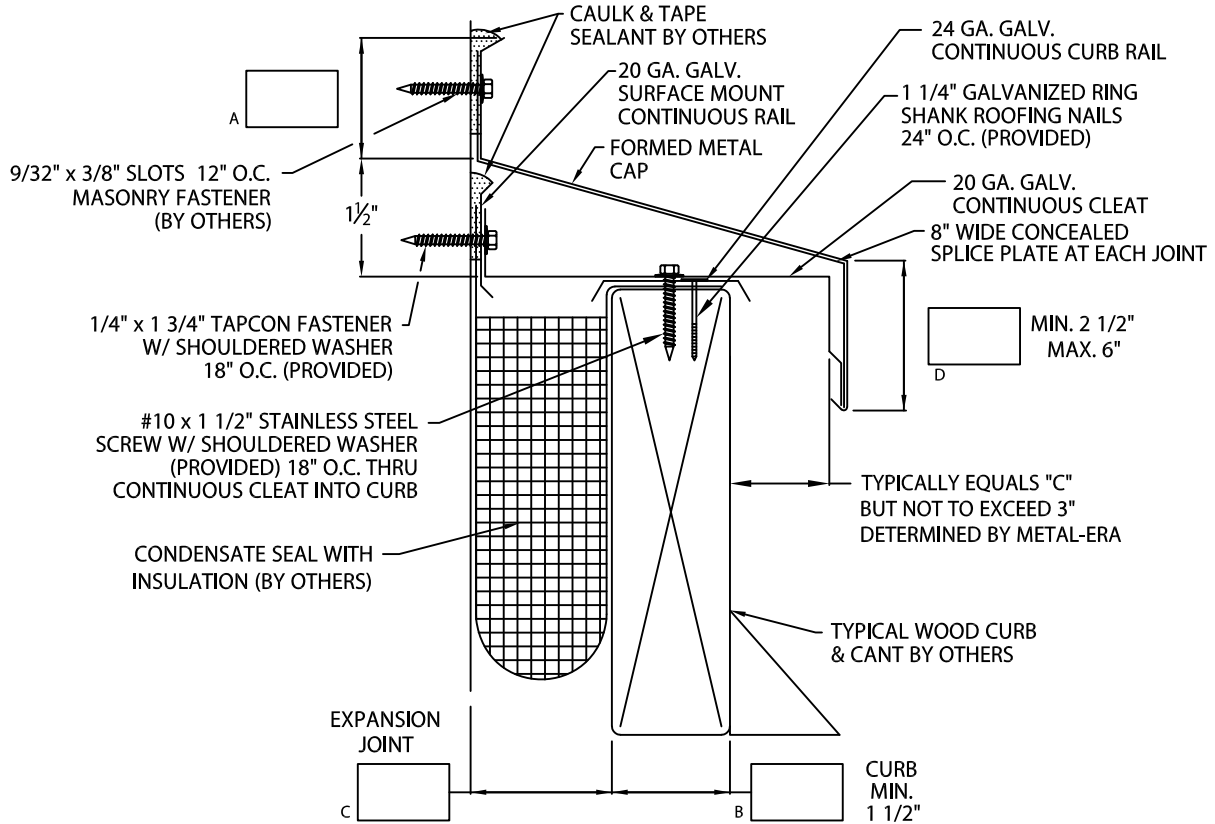


PERMA-TITE EXPANSION JOINT

ROOF TO WALL VERSION



-- WELDED MITERS AND ACCESSORIES
 CHECK ONE REQUIRED (SURCHARGE) NOT APPLICABLE

– UNLESS OTHERWISE NOTED, FABRICATION OF MITERS AND ACCESSORIES ARE FURNISHED STANDARD UTILIZING A NON-PENETRATING QUICKLOCK JOINT, THEN FACTORY SEALED WATERTIGHT.

MATERIAL:

___ 24 GA. GALV. STEEL ___ .050" ALUMINUM
 ___ .040" ALUMINIUM ___ .063" ALUMINIUM
 ___ OTHER _____

COLOR: _____ FINISH: _____

Fabrication will proceed only after receipt of signed print approval.

Print Approval:

Architect and/or contractor shall verify all dimensions, sizes and quantities. All products to be installed in strict accordance with Metal-Era's printed instructions.

Approved by: _____

Date: _____

QUANTITIES:

_____ LINEAL FEET 12'-0" LENGTHS
 _____ OUTSIDE MITER(S) @ (_____)°
 _____ INSIDE MITER(S) @ (_____)°
 _____ RIGHT HAND ENDCAP INSERT(S) (AS SEEN FROM ROOF)
 _____ LEFT HAND ENDCAP INSERT(S) (AS SEEN FROM ROOF)
 _____ RIGHT ENDWALL FLASHING(S)* (AS SEEN FROM ROOF)
 _____ LEFT ENDWALL FLASHING(S)* (AS SEEN FROM ROOF)

* .040" MILL PAINTED/WELDED ONLY

PROJECT:

ARCHITECT:

ROOFING CONTRACTOR:

REPRESENTATIVE/DISTRIBUTOR:

Corporate Offices, Manufacturing
 1600 Airport Road; Waukesha, WI 53188
 Phone: 800-558-2162
 Fax: 800-373-9156
 www.metalera.com



DATE: 09/22/20

DRN BY: JJC

CKD BY: MDF

SHT.# ____ OF ____

DWG# 11028-7908