



Metal-Era was willing to step up, assume the risk for wind uplift and keep everybody happy. Metal-Era satisfied a need before it ever got the chance to become a problem.

- Tom Elander, Project Manager



Project Name: *Midway Airport
Chicago, IL*

Building Type: *Airport*

Architect: *A. Epstein & Sons Internations, Inc.*

Roofer: *Roofs, Inc.*

Materials: *Perma-Tite Coping*

Going the Extra Mile for Chicago's Midway Airport Expansion

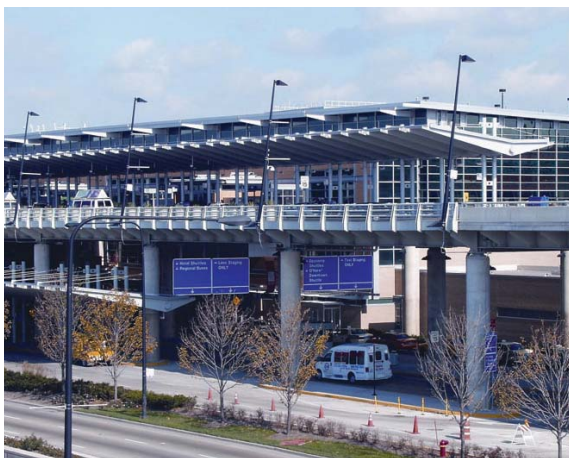
To Create Satisfied Customers Like Midway Airport The Sky's the Limit for Metal-Era

In response to rising air traffic in the Chicago area, the city's aviation department embarked upon a \$722 million expansion project which began in 1997. Plans called for construction to be completed in several phases including a six-story car park, a new terminal building, new airline gates and concourse, a new customs facility and a new 41-gate concourse. A key factor for contractors working on the project was that each phase of construction had to be completed without any disruption of airport service.

Full System Warranty Puts Architects At Ease

Roofs Inc., of Lyons, IL, was awarded the massive roofing contract. Tom Elander is a sales

engineer for Roofs Inc. and the Midway Airport project manager. "The lead architectural firm (A. Epstein and Sons International, Inc.) and the owner's representative had specified a full system roofing warranty, which meant that the sheet metal had to be covered along with the membrane materials," said Elander. "We had to find a way to make that happen."



To do just that, Metal-Era, Inc., a leading roof edge manufacturer, agreed to indemnify one of their coping products to be covered under the membrane manufacturer's (Johns Manville) warranty. Although a competitive coping was originally specified, Metal-Era was willing to step up, assume the risk for wind uplift and keep everybody happy.

"Metal-Era satisfied a need before it ever got the chance to become a problem," added Elander.

Metal-Era, Inc.

1600 Airport Road • Waukesha, WI 53188 • Phone (800) 558-2162 • Fax (800)-373-9156 • www.metalera.com



The airport's architect had also specified a custom 'Midway Silver' metallic paint finish for all of the roof components. "Metallic paints are difficult to match, particularly in this case where the components were constructed of varying materials," said Elander. To make the matching process even more difficult, some of the components were painted during the manufacturing process while others had to be painted in the field. "Metal-Era went the extra mile to get their paint manufacturer involved as an aid to a final solution. In the end, we recommended a coil coat finish that provided a better match than the powder coat originally specified. The architect was happy with the results, and all components matched."

"Metal-Era was willing to order a large amount of coil in order to assure the paint would consistently match throughout the entire project," said Elander.

Where There's A Will, There's A Way

"The original specs called for mitered and welded corners, which would have meant powder coating them on site. Since we had convinced the architect

to approve a coil coat, Metal-Era's solution was to use their Quick-Lock seam technology for the corner pieces to assure the corner paint would match the adjacent pieces – an integral key to the coping design," added Elander.

Going To Great Lengths

According to Elander, the benefits to working with Metal-Era are many. "Metal-Era's quality is superb – just what you want in an edge system." Metal-Era also manufactures their coping in 12 foot lengths as opposed to a competitor's 10 foot lengths. "On a job this size, you're talking about miles of coping. If you can install 20% more coping per piece, you save time and labor costs over the

life of the job. They also performed field measurement services when necessary – I don't know of another coping manufacturer who would offer that."

"They've been great to work with and were always willing to help us out when we had a scheduling bind. We appreciated Metal-Era's help throughout this project to make it a success and stay within budget."



Build in Performance

800-558-2162

www.metalera.com

